



**68 Braithwaite Road Tacoma NSW**

3 1 1

Set within the peaceful & tightly held riverside suburb of Tacoma, this unique offering spans approximately 9 acres and delivers an increasingly rare blend of space, privacy, lifestyle and room to grow.

Positioned in a quiet family friendly street, the property features a neat brick and tile home offering 3 bedrooms and an attached garage - comfortable as is, with scope to enhance or extend over time. It's the kind of holding that lets you settle in now while planning what comes next.

The home sits on approximately 1,350m<sup>2</sup> of cleared, fully fenced land zoned R2 Low Density Residential, providing a generous yard ideal for families, pets or additional improvements (STCA). Beyond this, the balance of the land

**Type** : House  
**Price** : Guide \$830,000 - ACRES OF SPACE  
**Land Size** : 3.65 ha  
**View** : <https://www.coastwidefn.com.au/sale/nsw/central-coast-region/tacoma/residential/house/8687897>



**Adrian Simpson**  
02 4353 1999



**David Want**  
0402 810 831

[For full version visit the website](https://www.coastwidefn.com.au)

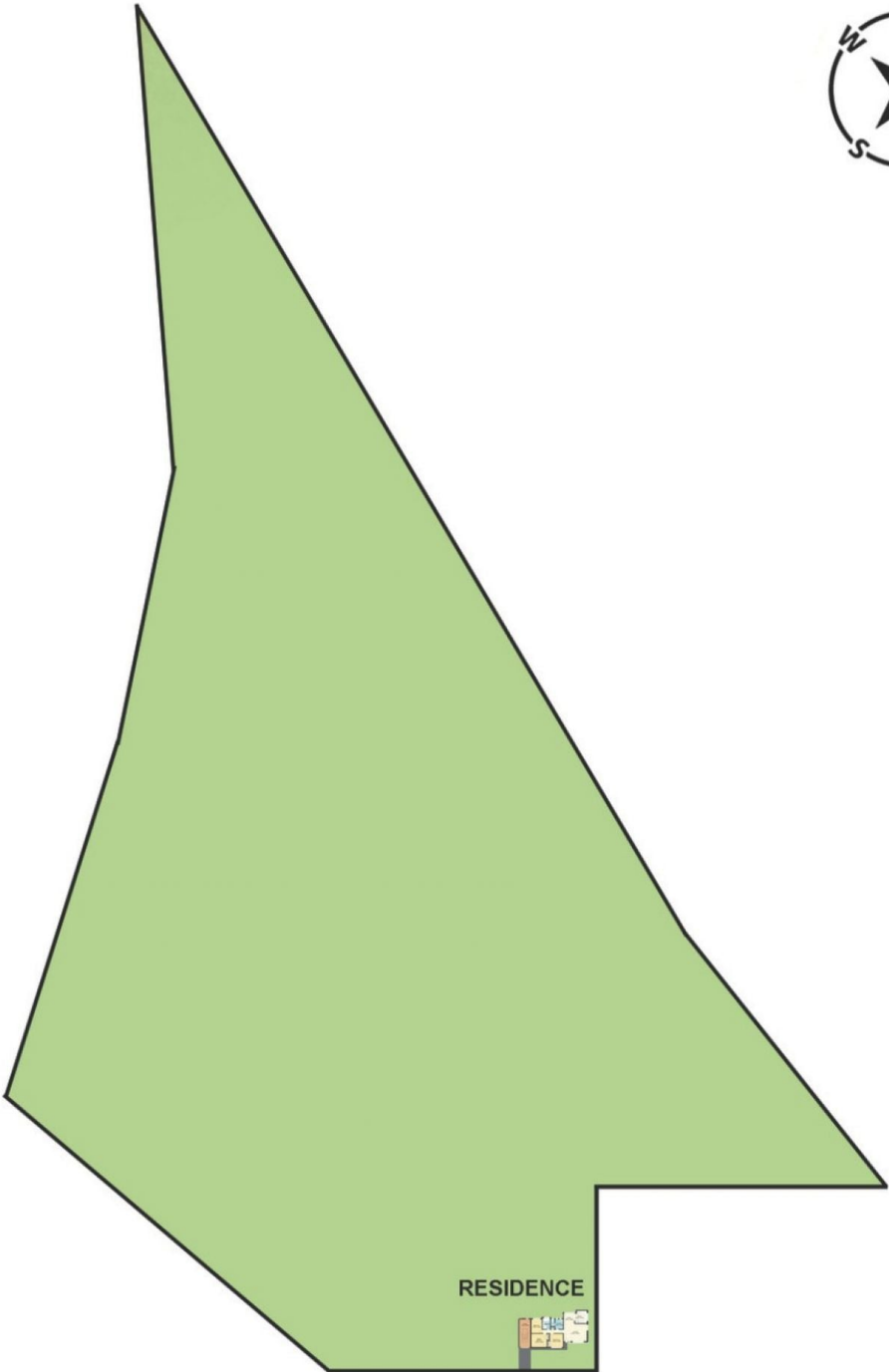
# 68 Braithwaite Road, Tacoma



Measurements are approximate. Not to scale. For illustrative purposes only. Boundaries are approximate

# 68 Braithwaite Road, Tacoma

SITE PLAN



BRAITHWAITE ROAD

Measurements are approximate. Not to scale. For illustrative purposes only. Boundaries are approximate