

## 72 Pacific Highway Wyong NSW

3 🚗

An ideal shopfront located in a prime position fronting the Pacific Highway in Wyong directly opposite the Train/Bus Station.

The premises consists of a 45sqm shopfront/showroom on street level with a 35sqm area upstairs comprising of 3 offices.

It offers a a split system air conditioner, galley kitchen, separate male and female toilets as well as secured parking for 3 cars at rear with access from Peters Lane.

The growing township of Wyong will bring great exposure to your business with plenty of foot traffic past the door and you are surrounded by other successful businesses.

Outgoings - 50% land rates, 50% water rates, fire services.

**Price** : \$1,805 P/M INC. GST  
**Building Size** : 80 sqm  
**View** : <https://www.coastwidefn.com.au/lease/nsw/central-coast-region/wyong/commercial/retail/7944146>



**Adrian Simpson**  
02 4353 1999

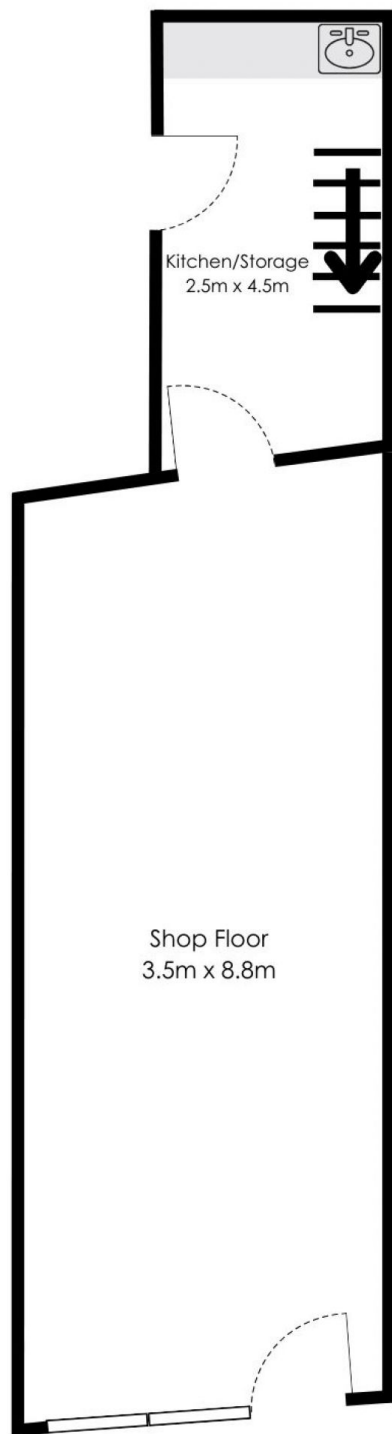


**David Manuelle**  
02 4353 1999

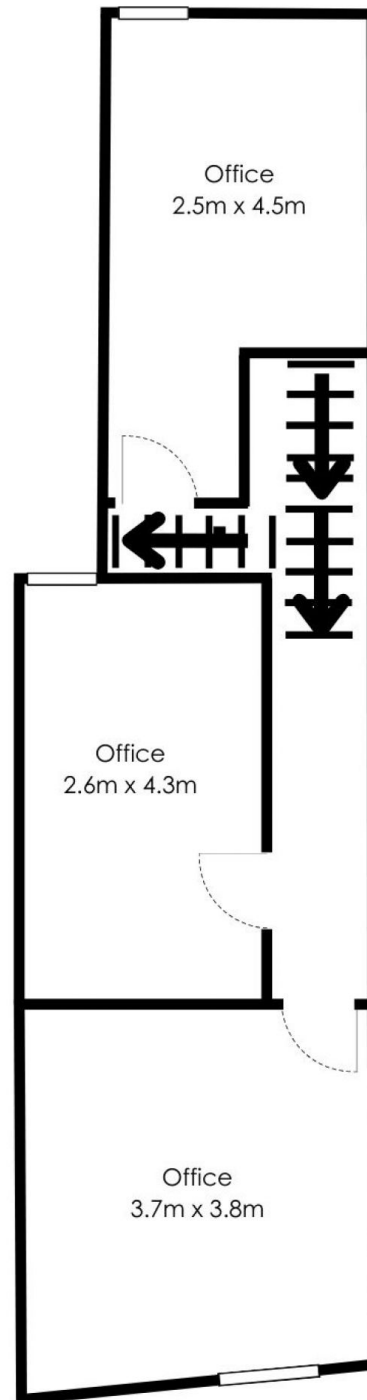
<https://www.coastwidefn.com.au>

We sell, rent and manage Real Estate, Residential, Lifestyle and Commercial across the Central Coast

# 72 Pacific Highway, Wyong



GROUND FLOOR



FIRST FLOOR

Total approx. floor area: 80m<sup>2</sup>

Measurements are approximate. Not to scale. For illustrative purposes only. Boundaries are approximate



**firstnational**  
COMMERCIAL | Coastwide