



14 Treelands Drive Jilliby NSW

4 3 4

Immerse yourself in the private and peaceful surroundings of this exclusive 3.58-acre property, where tranquility reigns supreme. Every window offers a leafy green outlook, inviting you to relax and unwind with ease.

Inside, generous living spaces and large bedrooms provide ample room for comfort, with the convenience of town water supply. Step outside to discover an outdoor oasis, complete with an inground pool, spa, covered and open entertainment areas, perfect for leisurely days and evenings spent with loved ones.

The home has recently been freshly painted, new carpets, and modern LED lighting, this bespoke acreage retreat exudes luxury and comfort. Nestled among the trees, it offers unparalleled privacy and seclusion, creating a sanctuary to call your own.

Price : \$1,800,000 to \$1,900,000
Land Size : 3.58 Acres
View : <https://www.coastwidefn.com.au/sale/nsw/central-coast-region/jilliby/residential/acreage-semirural/7944103>

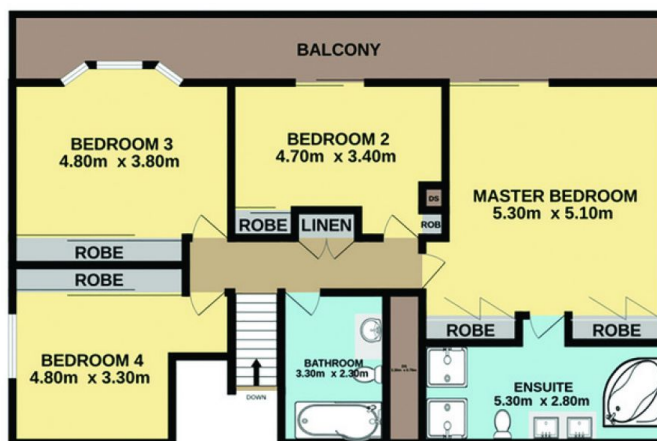
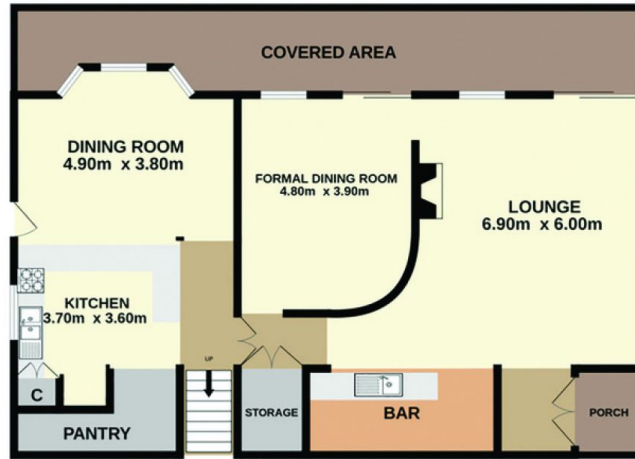


David Want
0402 810 831

<https://www.coastwidefn.com.au>

We sell, rent and manage Real Estate, Residential, Lifestyle and Commercial across the Central Coast

14 Treelands Drive, Jilliby



Total Approx. Floor Area

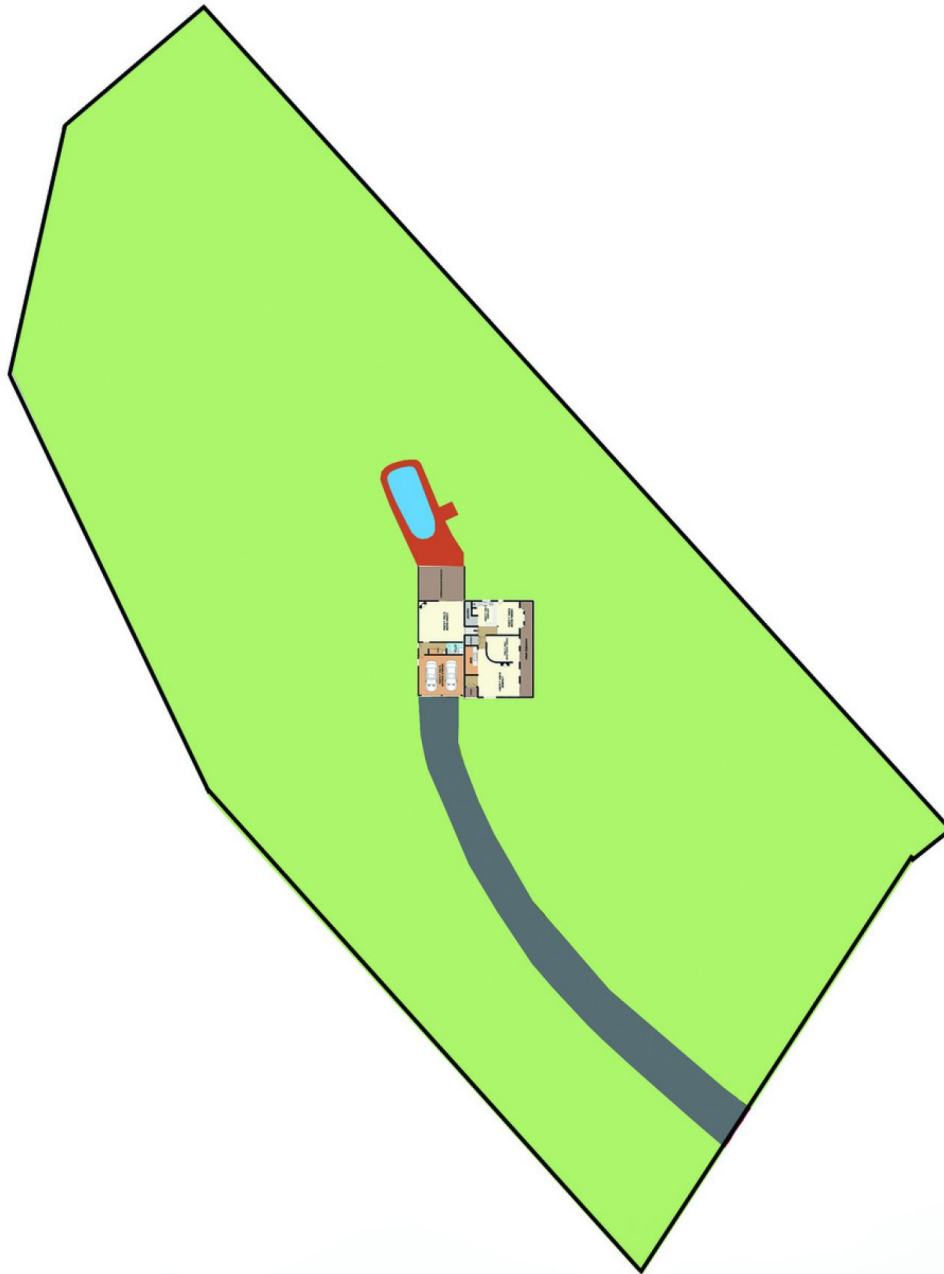
310.00 sq.m.

Measurements are approximate. Not to scale. For illustrative purposes only. Boundaries are approximate.



14 Treelands Drive, Jilliby

SITE PLAN



Measurements are approximate. Not to scale. For illustrative purposes only. Boundaries are approximate.