

2/54 Pacific Highway Wyong NSW

2/54 PACIFIC HIGHWAY, WYONG

A smartly renovated office/shopfront located in an Iconic building opposite Wyong Train Station.

With street frontage to Church Street these premises enjoy great exposure to the passing traffic as well as a convenient location within the bustling town centre. Surrounded by other successful businesses this is a great opportunity to for those looking to start fresh or move their business to new location. An ideal position for professional office space or a retail shop.

The space consists of a light and bright reception area as well as 3 separate offices all with water basins. There is also a separate internal toilet.

Building Size : 53 sqm
Land Size : 53 sqm
View : <https://www.coastwidefn.com.au/lease/nsw/central-coast-region/wyong/commercial/retail/7864476>



Adrian Simpson
02 4353 1999

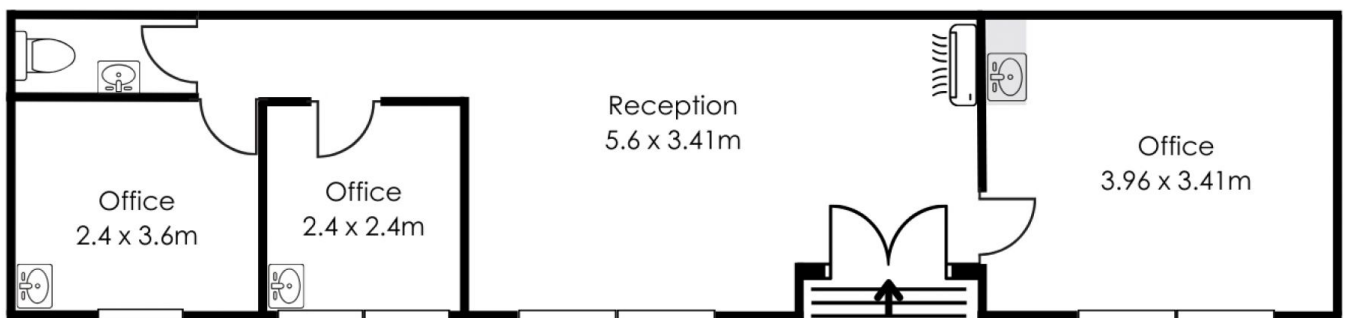


David Manuelle
02 4353 1999

<https://www.coastwidefn.com.au>

We sell, rent and manage Real Estate, Residential, Lifestyle and Commercial across the Central Coast

2/54 Pacific Highway, Wyong



Total approx. floor area: 53m²

Measurements are approximate. Not to scale. For illustrative purposes only. Boundaries are approximate



firstnational
COMMERCIAL | Coastwide