



### 5/147 Newcastle Road Wallsend NSW

5 🚗

Prominent property located on the main road under 20 minutes to Newcastle CBD, this high clearance suburban warehouse building provides a lettable area of approx. 492m<sup>2</sup>. Ideal for trade supply & distribution or bulky retail, the property consists of:

- Warehouse / Workshop space of approximately 195m<sup>2</sup>
- Groundfloor showroom space of approximately 284m<sup>2</sup>
- Mezzanine showroom space of approximately 148m<sup>2</sup>
- 5 Designated parking spaces
- Toilet and bathroom facilities.

\$7,150.00 per month including GST and outgoings.

**DISCLAIMER:** This advertisement contains information provided by third parties. While all care is taken to ensure otherwise, First National Real Estate Coastwide, does not

**Price** : \$7,150 Inclusive of GST and Outgoings pm  
**Building Size** : 492 sqm  
**View** : <https://www.coastwidfn.com.au/lease/nsw/newcastle-region/wallsend/commercial/industrial/7723213>



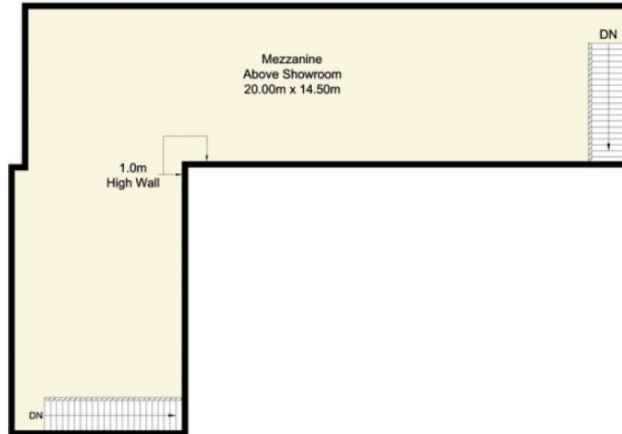
**David Manuelle**  
02 4353 1999

<https://www.coastwidfn.com.au>

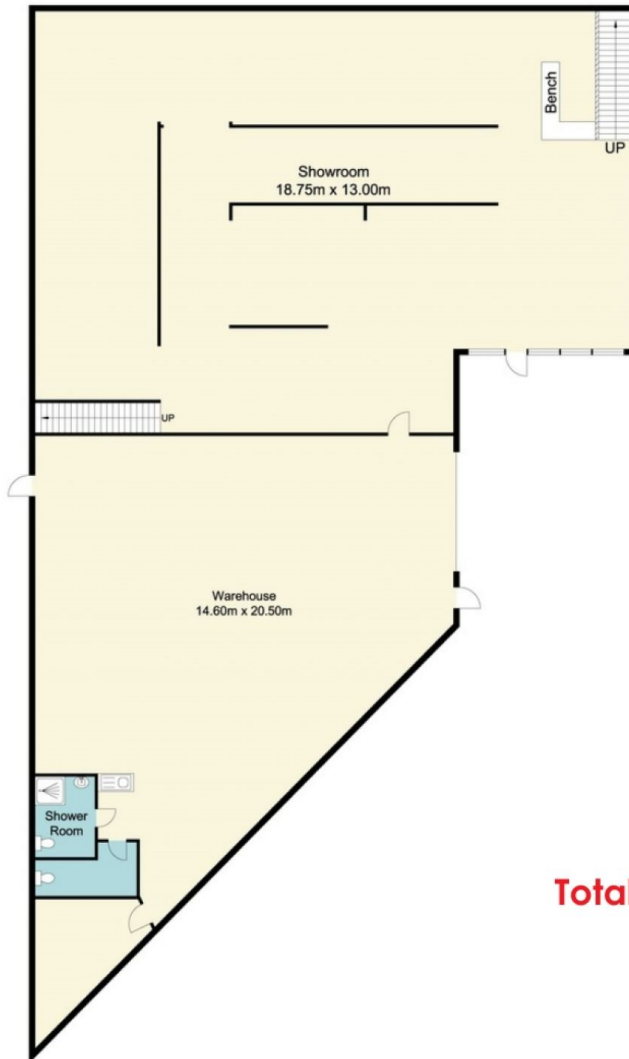
We sell, rent and manage Real Estate, Residential, Lifestyle and Commercial across the Central Coast



# 5/147 Newcastle Road, Wallsend



Mezzanine



Ground Floor

**Total approx floor area:  
606.46m<sup>2</sup>**

Measurements are approximate. Not to scale. For illustrative purposes only. Boundaries are approximate



**firstnational**  
REAL ESTATE | Coastwide