



**1/36 Treeview Place Mardi NSW**

3 1 1

Situated in a quiet street and only a few hundred meters walk from Westfield Tuggerah, this wonderful 3-bedroom duplex offers more than just a superior location.

The home consists of 3 bedrooms, 2 with built in wardrobes, A large open plan dining and family room off the galley style kitchen, a functional bathroom with separate bath and shower, single lock up garage with internal entry and a large level yard.

Currently returning \$480 per week with a tenant in place until the 29th of September, this could be a great opportunity for the investors looking to enter the market.

**Price** : \$ 590,000  
**Land Size** : 250.3 sqm  
**View** : <https://www.coastwidefn.com.au/sale/nsw/central-coast-region/mardi/residential/semi-detached/7641656>



**David Manuelle**  
02 4353 1999



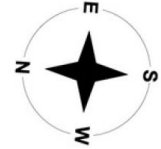
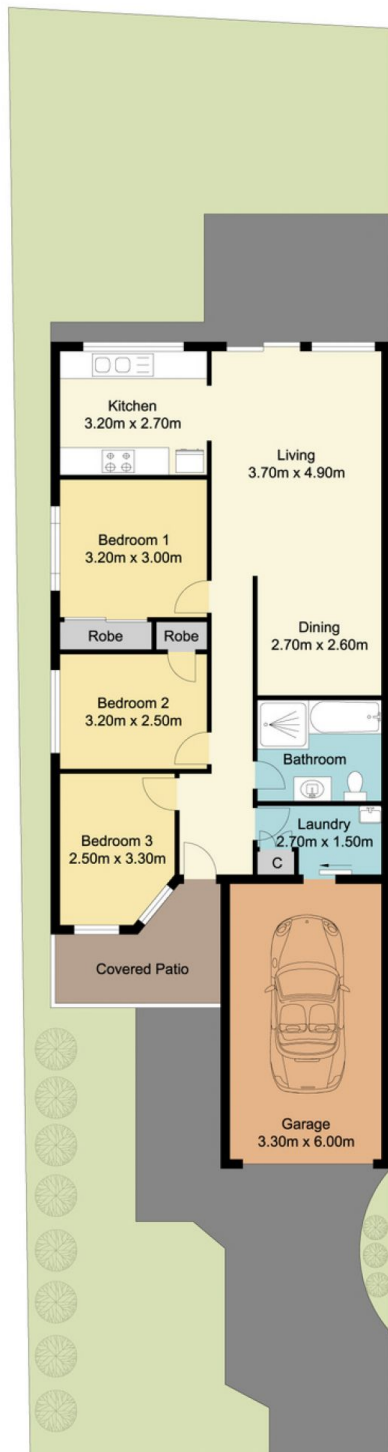
**Adrian Simpson**  
02 4353 1999

**DISCLAIMER:** This advertisement contains information provided by third parties. While all care is taken to ensure



# 1/36 Treeview Place, Mardi

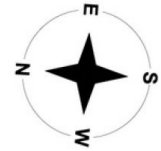
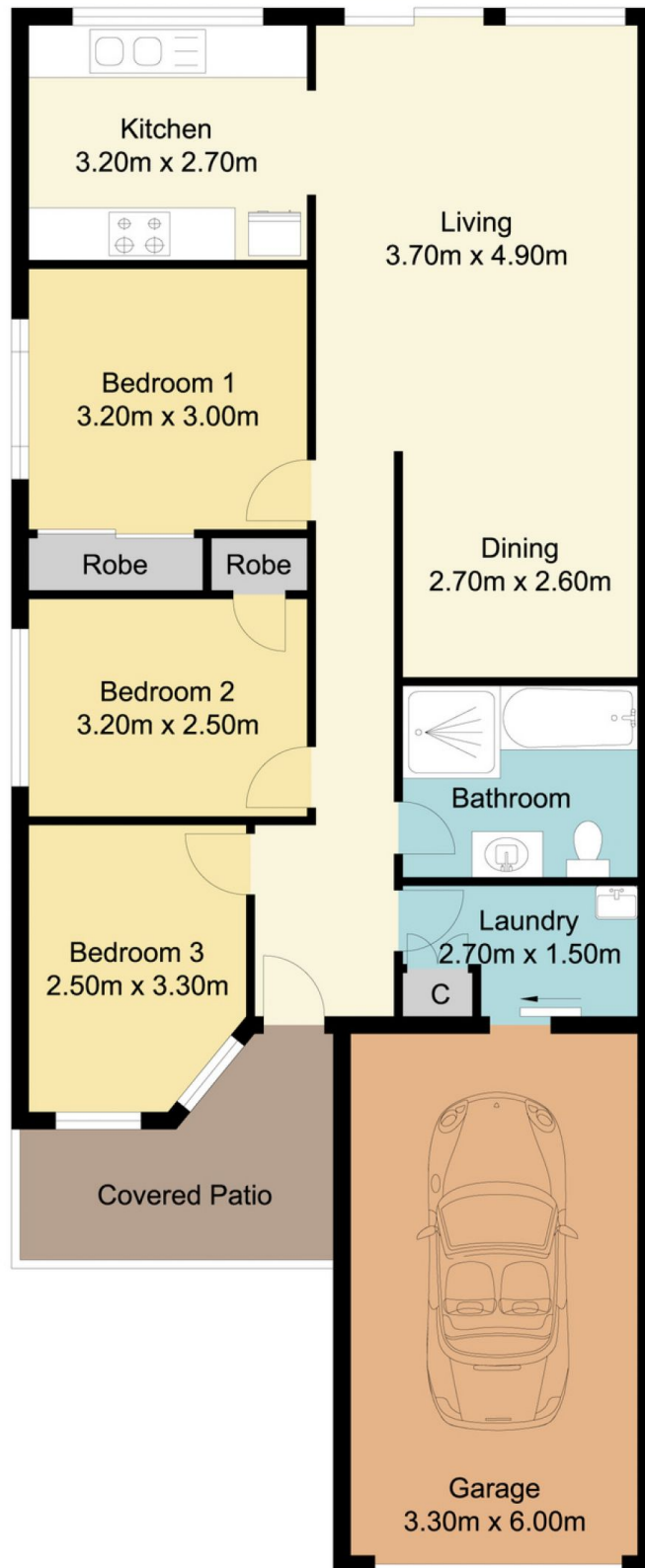
## SITE PLAN



Measurements are approximate. Not to scale. For illustrative purposes only. Boundaries are approximate.



# 1/36 Treeview Place, Mardi



**Total Approx Floor Area 102.51 Sq.m**

Measurements are approximate. Not to scale. For illustrative purposes only. Boundaries are approximate.