



**46 Fishburn Crescent Watanobbi NSW**

4 1

Offering 3 bedrooms with robes, lounge with open plan dining off the well-appointed kitchen that opens onto the large covered outdoor entertaining area.

**View :** <https://www.coastwidefn.com.au/lease/nsw/central-coast-region/watanobbi/residential/house/7597952>

The tandem (double length) garage has been converted to make a 2nd living area or possible 4th bedroom.

The covered entertaining area opens onto a sprawling fully fenced backyard offering ample lawn and garden space.

Complete with air conditioning and gas heating points this property simply feels like home.

\*\* AVAILABLE 03 JULY 2023

\*\* PETS ON APPLCIATION



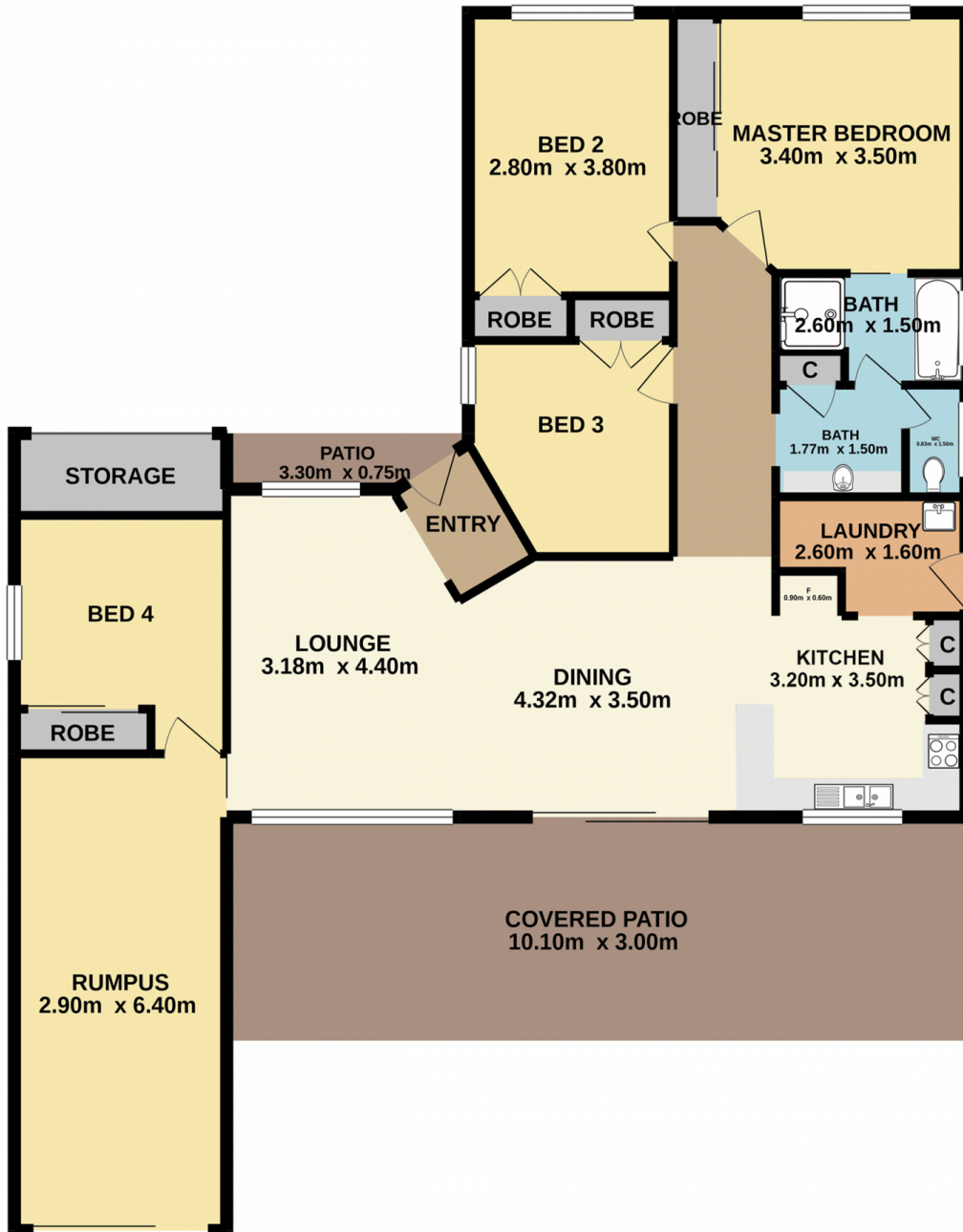
**firstnational**  
REAL ESTATE

Coastwide

**Property Management**  
02 4353 1999

<https://www.coastwidefn.com.au>

We sell, rent and manage Real Estate, Residential, Lifestyle and Commercial across the Central Coast



Total Approx. Floor Area 119.2 sq.m.

Measurements are approximate. Not to scale. For illustrative purposes only. Boundaries are approximate.