



6 Leewood Close Yarramalong NSW

3  2  2 

Time moves a little slower here, the sun shines a little brighter and the air a little fresher, Welcome to 6 Leewood Close, Yarramalong.

This quintessential country home is privately tucked away from the road and occupies an elevated position capturing wonderful views across the valley. Positioned on half an acre, the property offers you extra space to enjoy the lifestyle that is Yarramalong Valley, with loads of potential for the future.

The front verandah is the ideal space to enjoy time with family and friends, drenched in sunshine from the early morning to mid afternoon, relish in the gorgeous outlook of the mountains beyond while enjoying the private and peaceful surrounds.

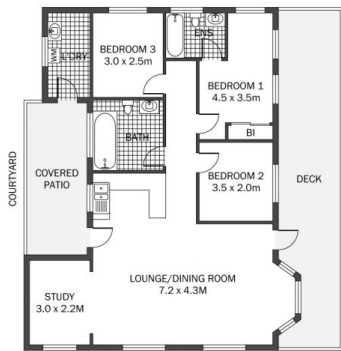
Price : \$ 890,000
Land Size : 2332 sqm
View : <https://www.coastwidefn.com.au/sale/nsw/central-coast-region/yarramalong/residential/acreagesemirural/7590186>



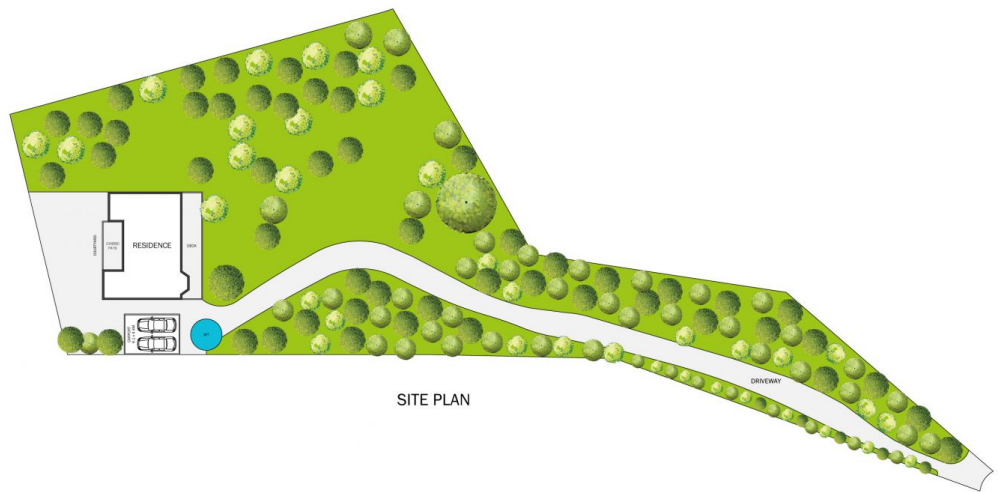
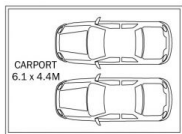
Skye Le Marseny
0403 271 122

<https://www.coastwidefn.com.au>

We sell, rent and manage Real Estate, Residential, Lifestyle and Commercial across the Central Coast



GROUND FLOOR



SITE PLAN

APPROX. INT: 89m²



THE INFORMATION CONTAINED IN THIS DOCUMENT HAS BEEN PROVIDED BY PARTIES. THE AGENCY HAS NOT CHECKED THE INFORMATION AND MERELY PASSES IT ON, NOT HAVING A BELIEF ONE WAY OR THE OTHER AS TO ITS ACCURACY. INTERESTED PARTIES SHOULD MAKE AND RELY UPON THEIR OWN ENQUIRIES.

6 Leewood Close, Yarramalong

