



**1/332a Ocean View Road Ettalong Beach NSW**

3 2 2

Defined by clean lines, natural light and open space, the attention to detail that has gone into creating this exquisite home will be appreciated by the most discerning of buyer. Exuding timeless coastal appeal and relaxed sophistication, the expansive single level floorplan that connects seamlessly to the outdoors, has been created to encompass year round entertaining and stunning ocean views.

The home itself offers:

- Large open plan living area with French Oak timber floors, gas fireplace, A/C, ceiling fan & frameless glass stacker doors.
- Stunning kitchen with 40mm stone benchtops, waterfall edges, double pyrolytic ovens, 900mm gas cooktop and butlers pantry.
- Generous master bedroom with split system A/C, ceiling

**Price** : \$ 2,900,000  
**Land Size** : 429 sqm  
**View** : <https://www.coastwidefn.com.au/sale/nsw/central-coast-region/ettalong-beach/residential/semi-detached/7449906>



**David Manuelle**  
**02 4353 1999**

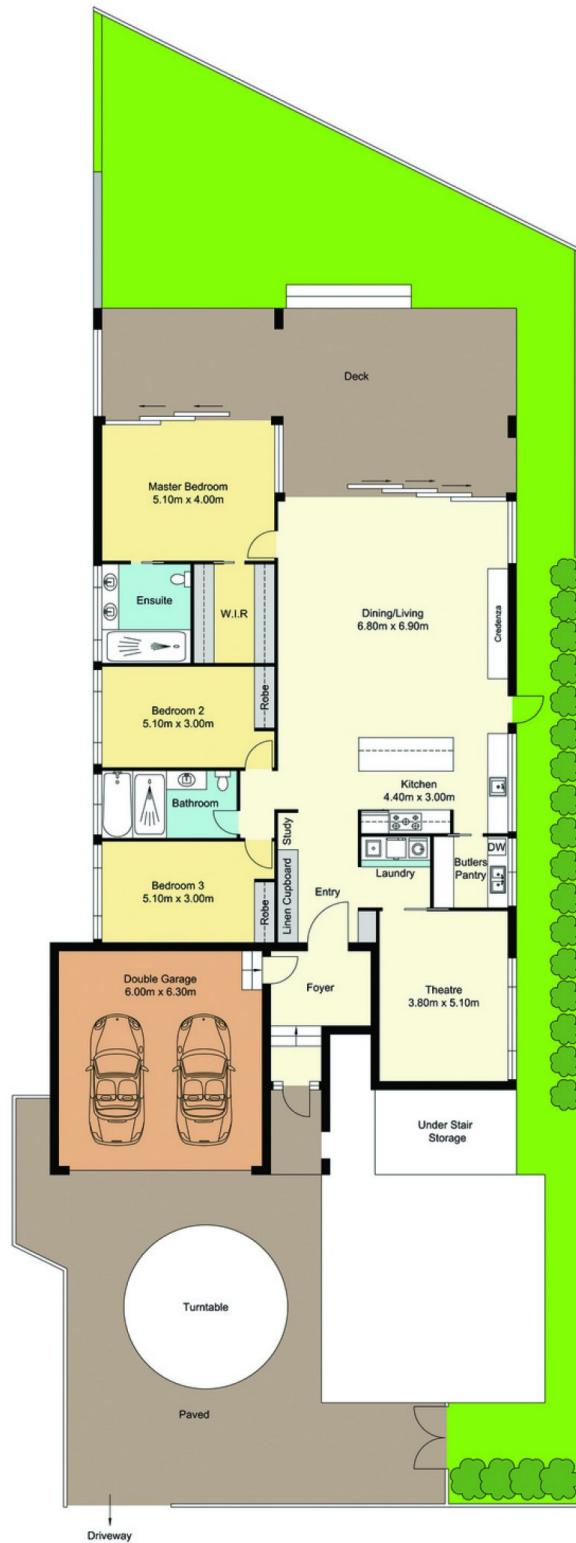
<https://www.coastwidefn.com.au>

We sell, rent and manage Real Estate, Residential, Lifestyle and Commercial across the Central Coast



# 1/332A Ocean View Road, Ettalong Beach

## SITE PLAN



Measurements are approximate. Not to scale. For illustrative purposes only. Boundaries are approximate.