



### 355 Pacific Highway Wyong NSW

3 1 1

Set on a 2087 sqm (approx.) block this property offers the opportunity to enjoy life in your own backyard with the potential to improve and grow.

The improvements include a neat, cozy 3 bedroom cottage with a detached double length garage.

Positioned away from the road with no rear neighbours, there is plenty of private open space to enjoy. A variety of fruit trees are scattered throughout the grounds and there is plenty of off street parking space for those with trucks, boats and caravans.

The central location is only a short drive to Wyong Town Centre, Shops and CBD while the Wyong Golf Course is right next door.

**Price** : \$ 860,000  
**Land Size** : 2087 sqm  
**View** : <https://www.coastwidefn.com.au/sale/nsw/central-coast-region/wyong/residential/house/7409937>



**Adrian Simpson**  
02 4353 1999



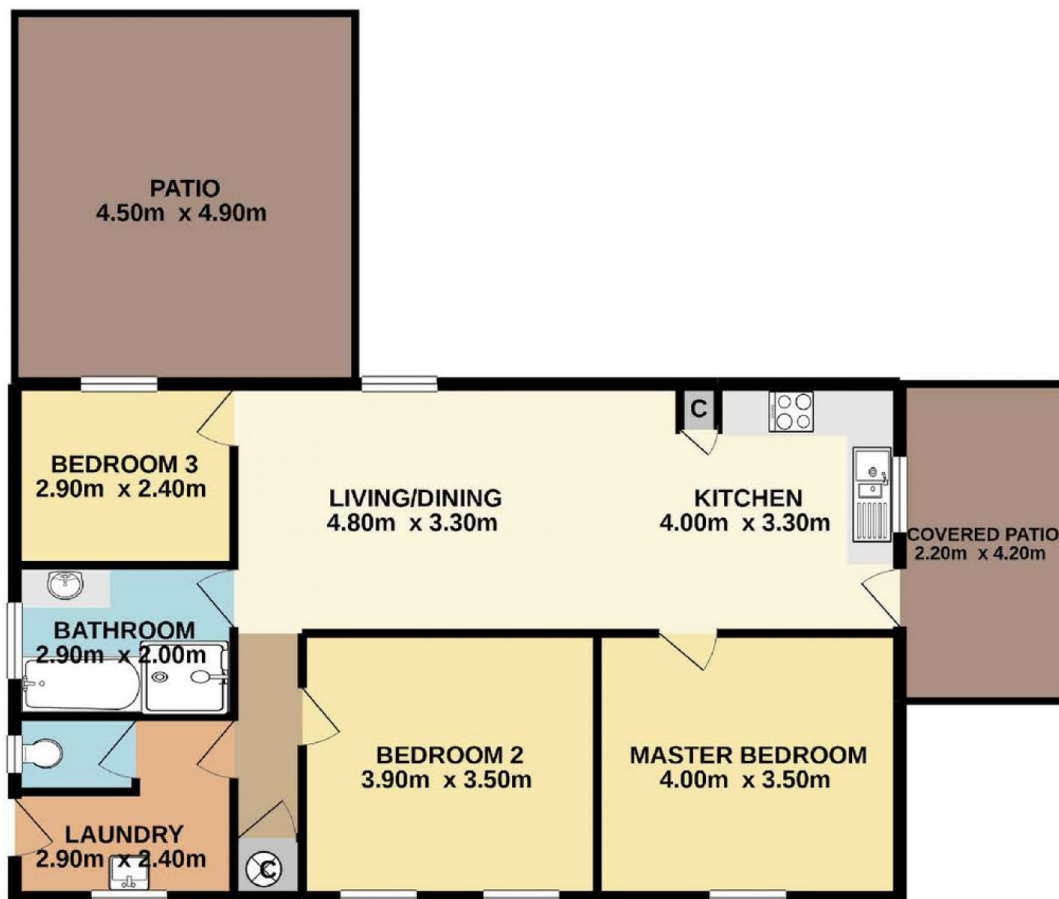
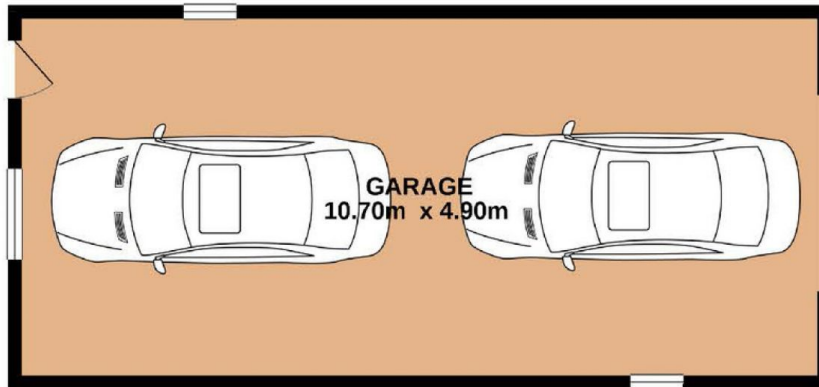
**David Manuelle**  
02 4353 1999

<https://www.coastwidefn.com.au>

We sell, rent and manage Real Estate, Residential, Lifestyle and Commercial across the Central Coast



# 355 Pacific Highway, Wyong



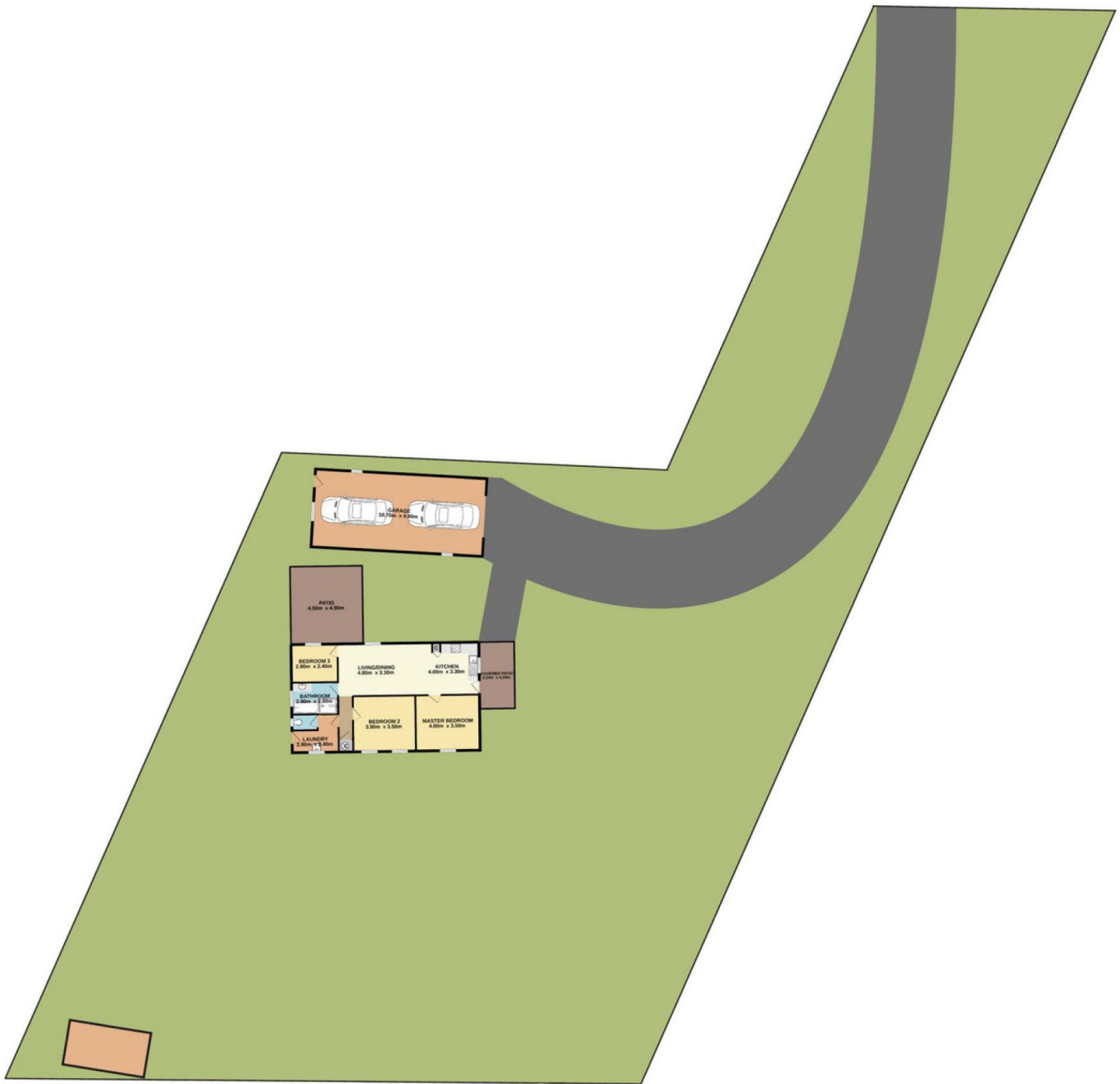
Total Approx. Floor Area 131.9 SQ.M.

Measurements are approximate. Not to scale. For illustrative purposes only. Boundaries are approximate.



# 355 Pacific Highway, Wyong

## SITE PLAN



Measurements are approximate. Not to scale. For illustrative purposes only. Boundaries are approximate.