

96 Pacific Highway Wyong NSW

4695.00 PER MONTH INCL. GST & INCL. OUTGOINGS.

This terrific office space has just become available in the centre of Wyong opposite Wyong Railway Station.

Air conditioned offices with parking, consisting of reception/waiting area, multiple offices, lunchroom, disabled access and disabled toilet.

Great signage exposure for your business, ready to walk into and start.

If additional space is required, there is currently available, some area upstairs. Available from 5th May 2022.

Call Chris Manuelle on 0412 133 143 for an inspection today.

Building Size : 160 sqm

View : <https://www.coastwidefn.com.au/lease/nsw/central-coast-region/wyong/commercial/offices/6949564>

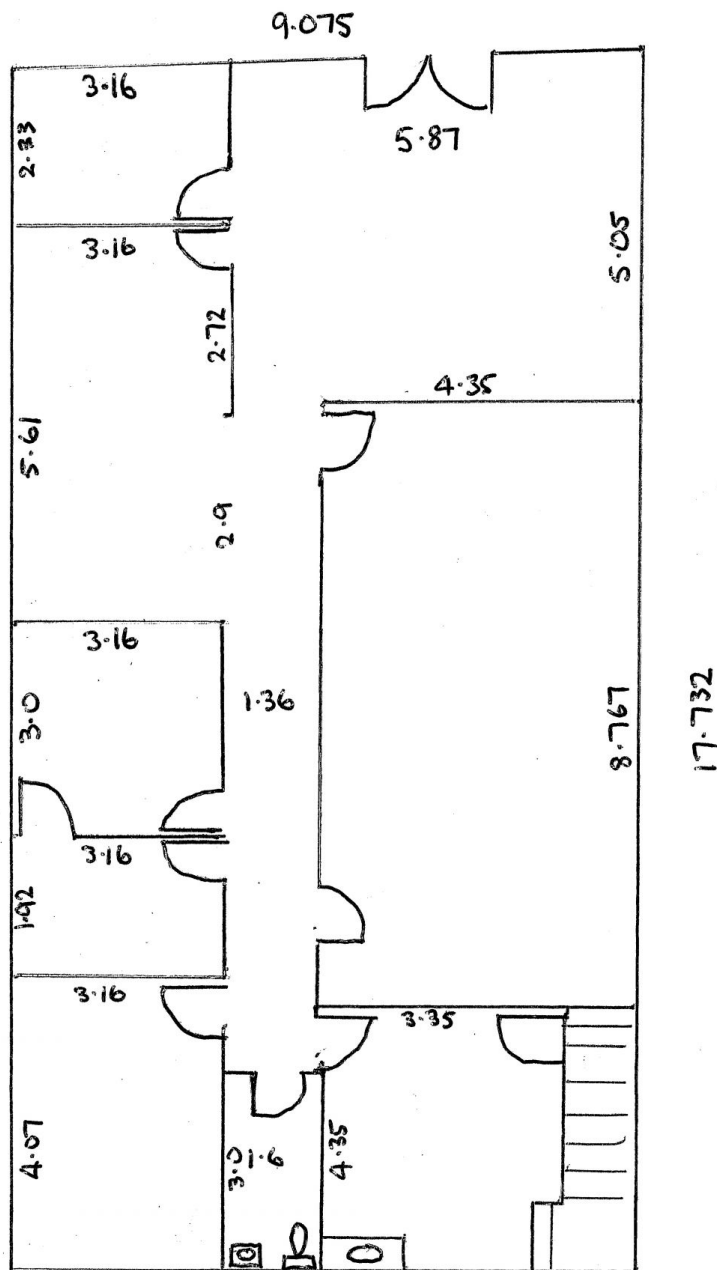


Chris Manuelle
0412 133 143

<https://www.coastwidefn.com.au>

We sell, rent and manage Real Estate, Residential, Lifestyle and Commercial across the Central Coast

96 PACIFIC HWY WYONGA



160²m.

5x AIR COND UNITS.

100mm PARTITION WALLS