



4 The Sheiling Mardi NSW

4 1 2

Conveniently located within the highly sought-after suburb of Mardi, this home boasts a comfortable floor plan in an ultra-convenient location.

The home features 4 comfortable bedrooms, 3 with built-in robes.

The floor plan offers a spacious living room, recently updated kitchen, bathroom with separate toilet plus a 2nd toilet in the laundry as well as a double garage with remote doors & internal access. The backyard is flat, private and fully fenced. The home also has a solar system to help lower your energy bills.

This is a free-standing house that comes with the benefits of a community swimming pool, tennis court & parkland areas. Community fees are approx. \$230.00 per quarter.

Price : \$ 718,000
Land Size : 362 sqm
View : <https://www.coastwidefn.com.au/sale/nsw/central-coast-region/mardi/residential/house/6899829>



David Manuelle
02 4353 1999



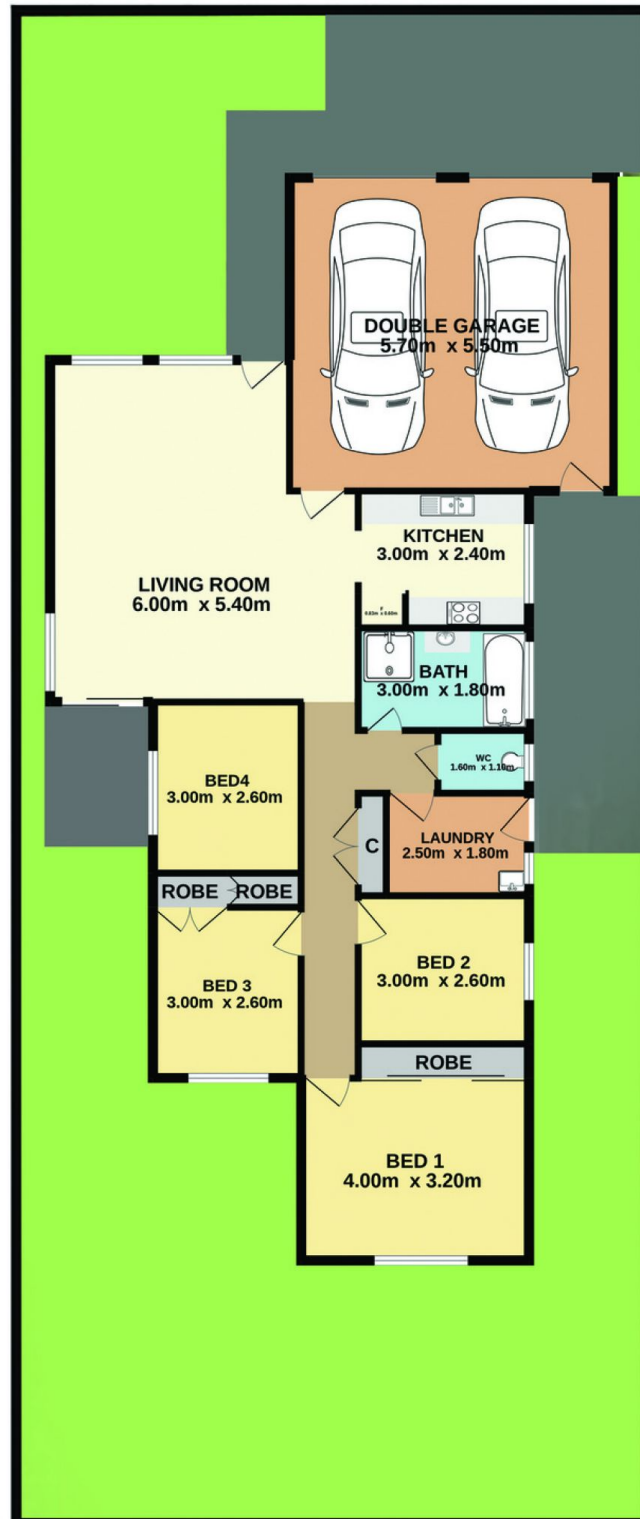
Adrian Simpson
02 4353 1999

<https://www.coastwidefn.com.au>

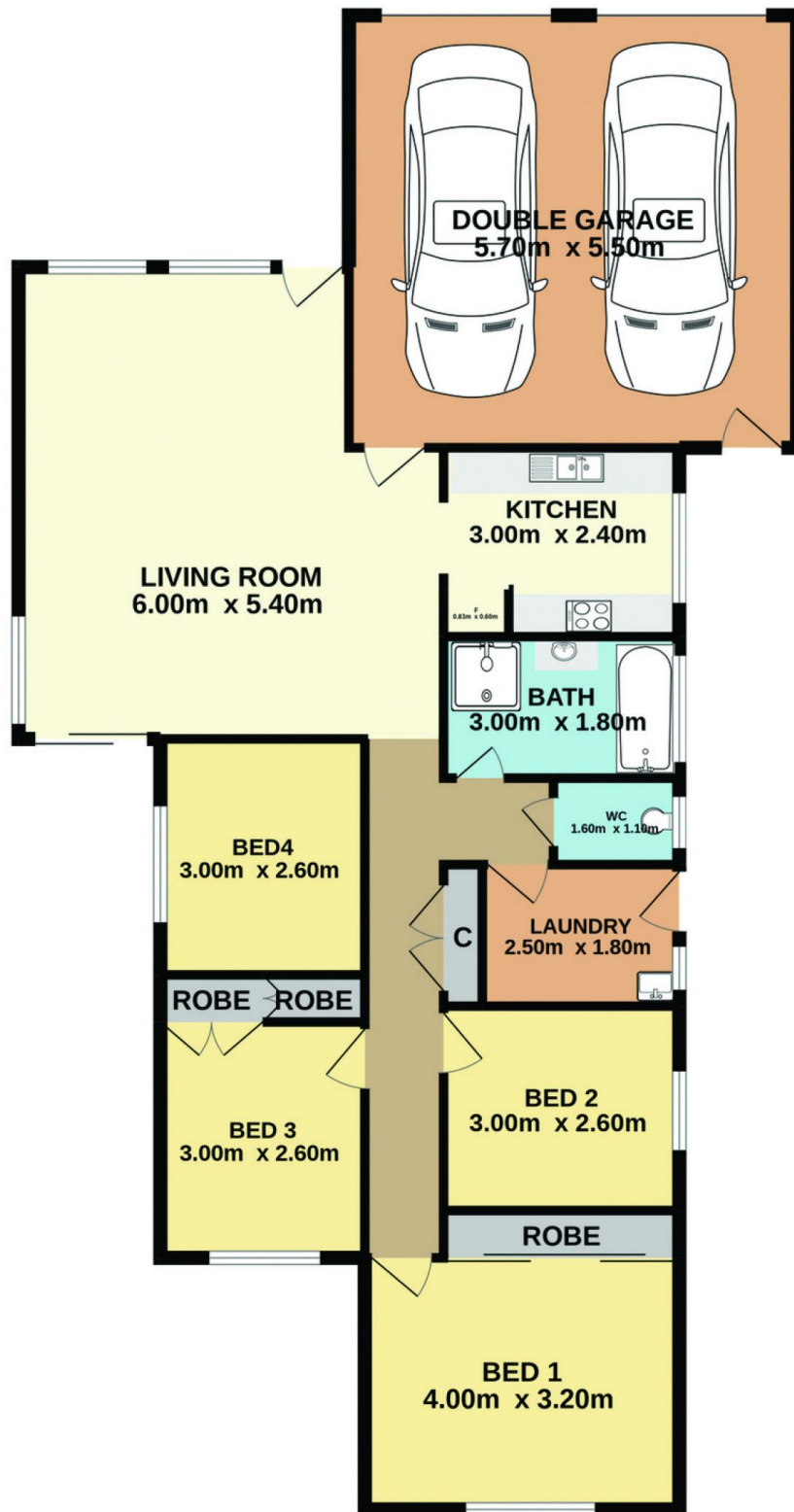
We sell, rent and manage Real Estate, Residential, Lifestyle and Commercial across the Central Coast

4 The Sheiling, Mardi

SITE PLAN



4 The Sheiling, Mardi



Total Approx. Floor Area 128.4 sq.m.

Measurements are approximate. Not to scale. For illustrative purposes only. Boundaries are approximate.