



30 Linga Longa Road Yarramalong NSW

4 2 3

Set in the picturesque Yarramalong Village and being offered to the market for the first time in over 20 years this home has the charm of a country cottage whilst boasting a spacious floor plan to cater for the whole family.

The home offers ample living space that includes 2 separate lounges upstairs while downstairs offers a TV room, study and a large rumpus with combustion fireplace. The country style kitchen is the jewel of this home and offers a functional layout as well as plenty of space for the dining room table.

4 bedrooms with 3 upstairs and 1 downstairs plus a bathroom on each floor ensures there is plenty of accommodation for the growing family, extended family, guests and in-laws.

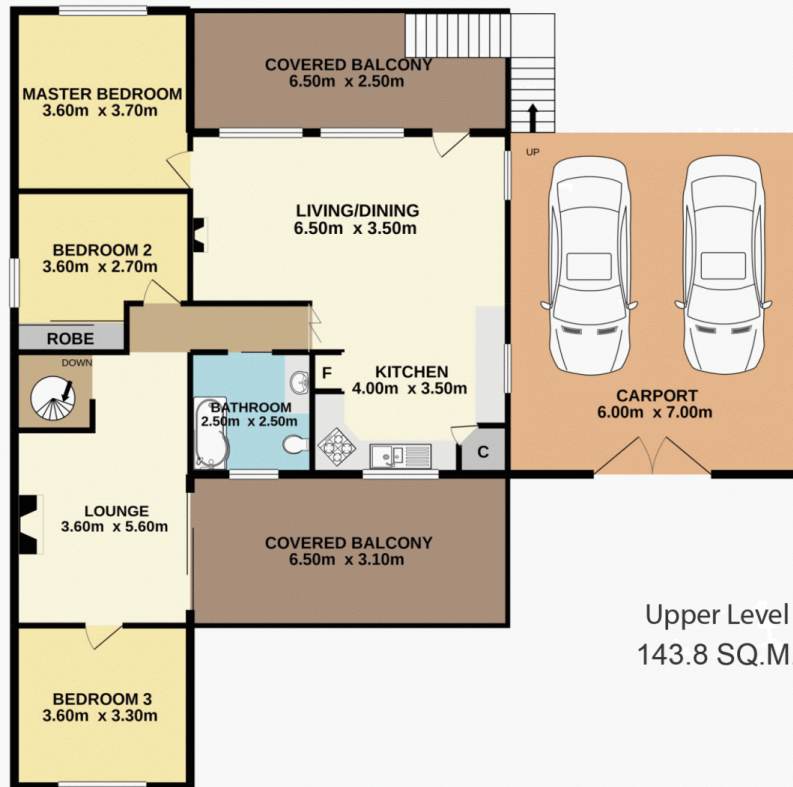
Price : \$ 715,000
Land Size : 678 sqm
View : <https://www.coastwidefn.com.au/sale/nsw/central-coast-region/yarramalong/residential/house/6411905>



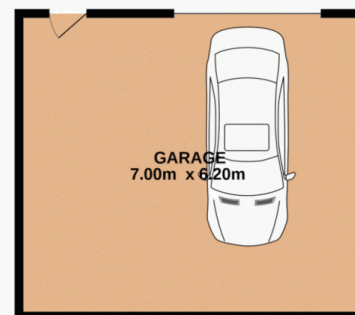
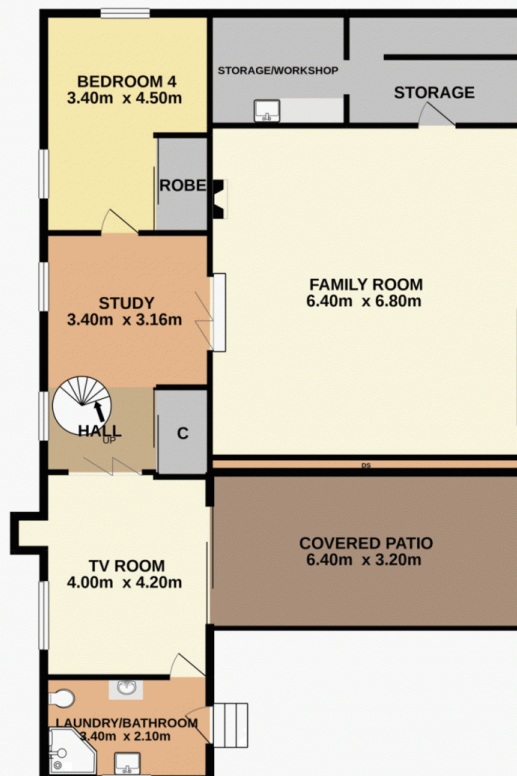
Adrian Simpson
02 4353 1999

<https://www.coastwidefn.com.au>

We sell, rent and manage Real Estate, Residential, Lifestyle and Commercial across the Central Coast



Upper Level
143.8 SQ.M.



Lower Level
157.1 SQ.M.

Total Approx. Floor Area 301.0 SQ.M.

Measurements are approximate. Not to scale. For illustrative purposes only. Boundaries are approximate.

SITE PLAN

