



## 2/12 Hawthorn Place Mardi NSW

3 1 1

Tastefully updated and in good condition, this impressive two-storey duplex offers a comfortable floor plan, a private position and a great opportunity for the home buyer or the investor.

The home features 3 bedrooms, 2 with robes, light and bright open plan living with A/C, a renovated galley style kitchen, modernised bathroom, private fully fenced yard, internal laundry with 2nd toilet and a single lock up garage.

Investors looking for a great investment can expect a return in the vicinity of \$420 - \$430 per week.

This is a prime opportunity to purchase a fantastic property in a sought after location within close proximity to schools, Westfield Shopping Centre, Tuggerah Station and the M1 Motorway access.

**Price** : \$ 533,000  
**Land Size** : 295 sqm  
**View** : <https://www.coastwidefn.com.au/sale/nsw/central-coast-region/mardi/residential/townhouse/6383363>

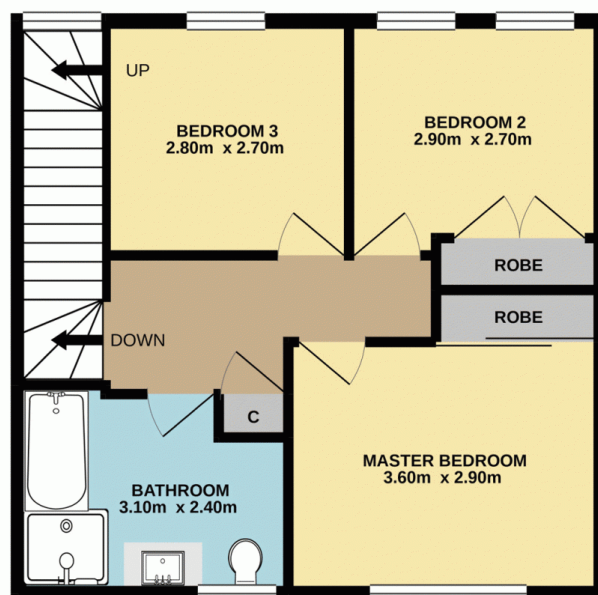
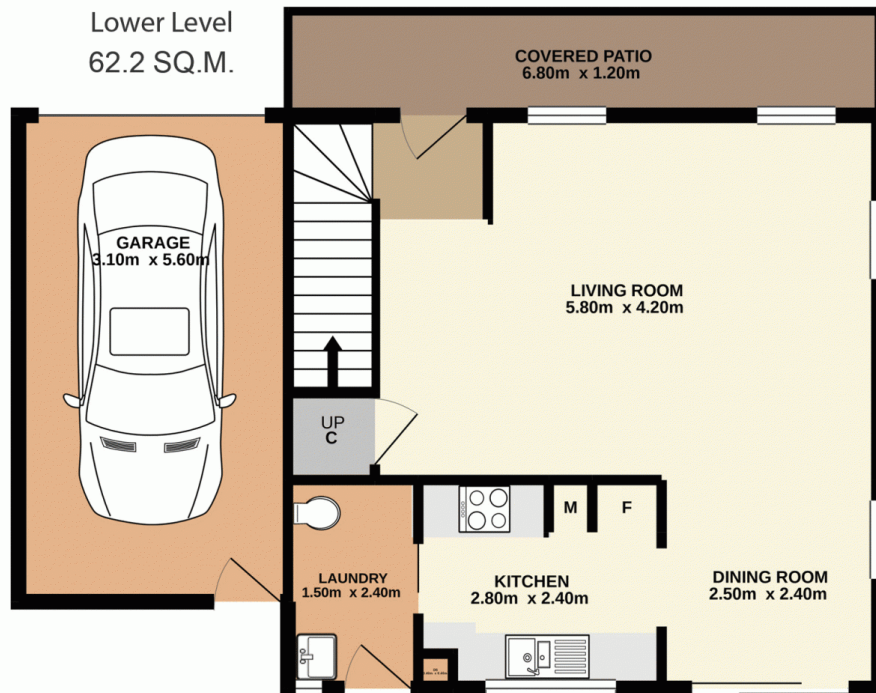


**David Manuelle**  
**02 4353 1999**

<https://www.coastwidefn.com.au>

We sell, rent and manage Real Estate, Residential, Lifestyle and Commercial across the Central Coast





Total Approx. Floor Area 106.4 SQ.M.

Measurements are approximate. Not to scale. For illustrative purposes only. Boundaries are approximate.

SITE PLAN

