

#### 4/7 Apprentice Drive Berkeley Vale NSW

MASKS MUST BE WORN AT OPEN FOR INSPECTIONS.

Located in the heart of the Berkeley Vale industrial hub is this 148 sqm (approx.) industrial unit.

Currently set up as a car restoration shop, this unit offers a small front office, open work space, small storage / mezzanine area, spray booth, car hoist, swinging arm working station and bathroom.

Currently leased at \$1,495 per month, the tenant is more than happy to stay on but is on an expired lease making the property ideal for the investor and occupier alike.

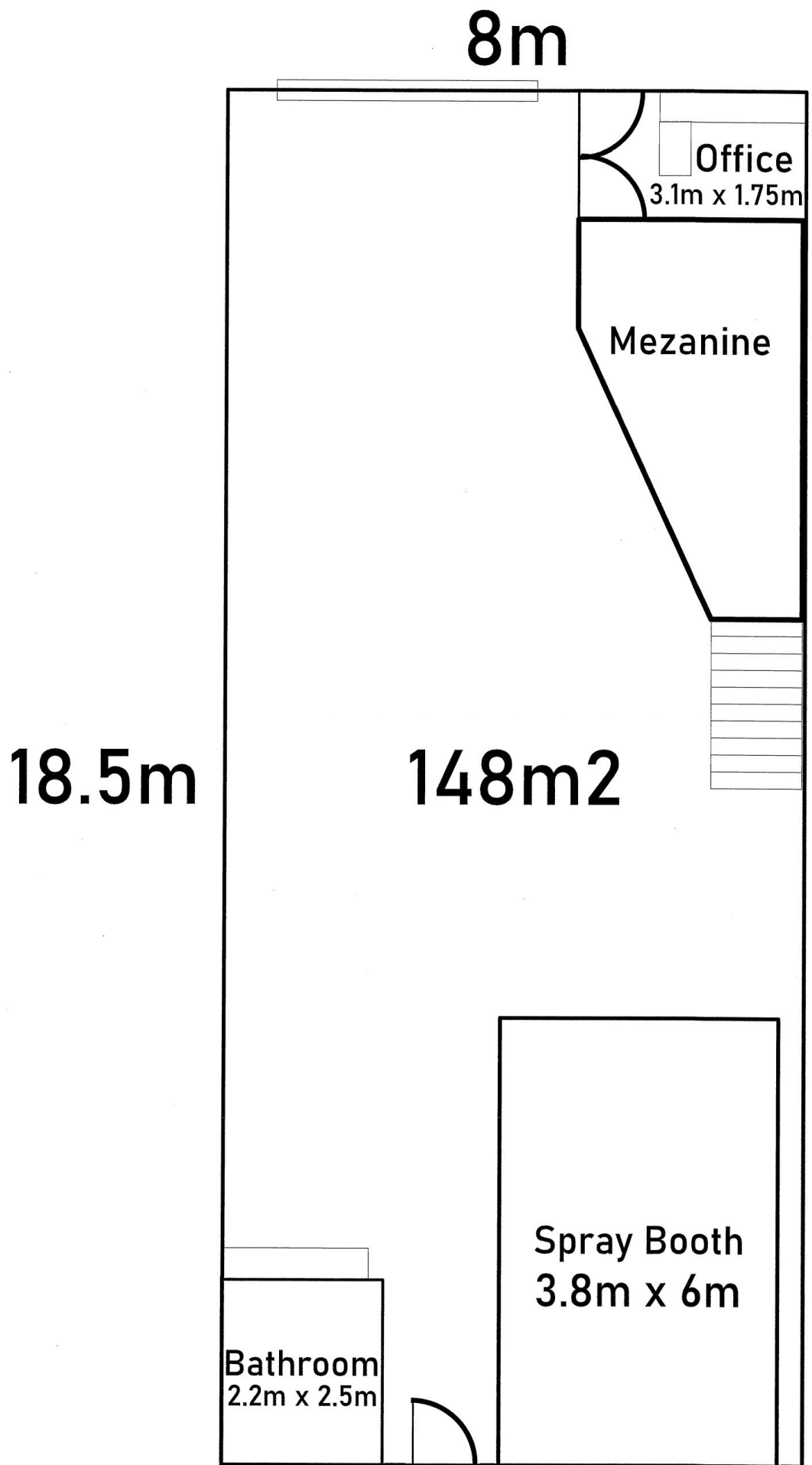
**Price** : \$ 320,000  
**Building Size** : 149 sqm  
**Land Size** : 149 sqm  
**View** : <https://www.coastwifn.com.au/sale/nsw/central-coast-region/berkeley-vale/commercial/industrial/6182241>



**David Manuelle**  
02 4353 1999

<https://www.coastwifn.com.au>

We sell, rent and manage Real Estate, Residential, Lifestyle and Commercial across the Central Coast



All Measurements are approximate only