



### 93 Settlement Drive Wadalba NSW

4 2 2

Located directly opposite the Wadalba wildlife corridor and offering a leafy outlook is this spacious family home.

The home boasts 4 generous bedrooms all with built-in robes, a walk-in robe and en-suite to the master, 5 living zones including formal lounge and dining room, family room off the well appointed kitchen, large rumpus room and an upstairs living area.

Other features include: 2 split system air conditioners, double garage with internal entry, large outdoor entertaining area, garden shed and plenty of yard for the kids to play.

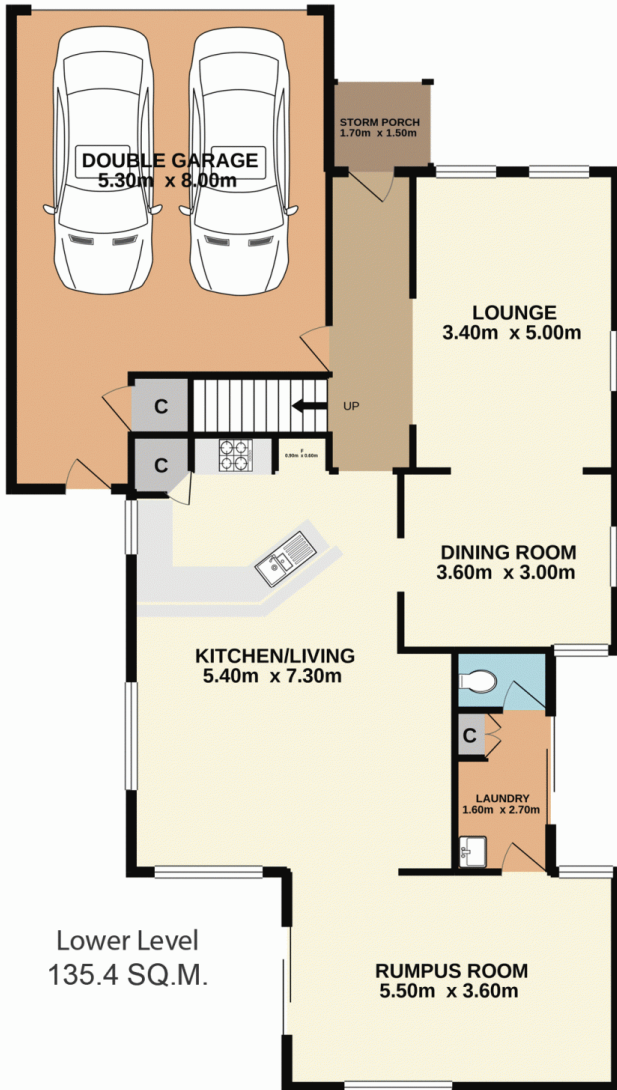
**Price** : \$ 740,000  
**Land Size** : 525 sqm  
**View** : <https://www.coastwidefn.com.au/sale/nsw/central-coast-region/wadalba/residential/house/6001698>



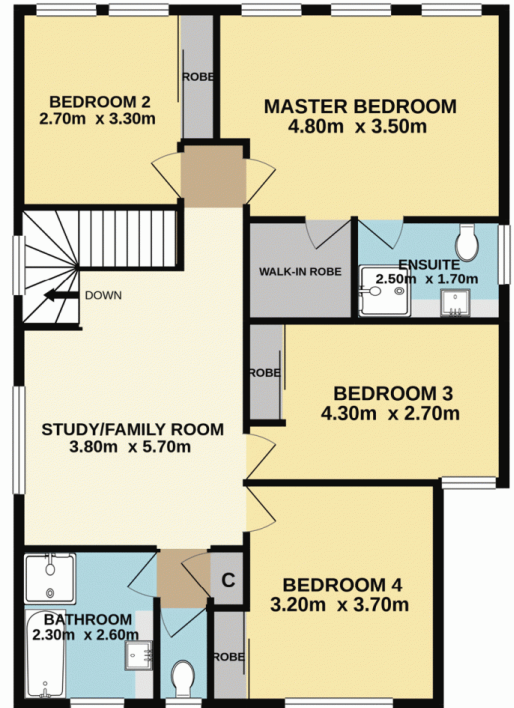
**David Manuelle**  
02 4353 1999

<https://www.coastwidefn.com.au>

We sell, rent and manage Real Estate, Residential, Lifestyle and Commercial across the Central Coast



Lower Level  
135.4 SQ.M.



Upper Level  
89.9 SQ.M.

Total Approx. Floor Area 225.2 SQ.M.

Measurements are approximate. Not to scale. For illustrative purposes only. Boundaries are approximate.

## SITE PLAN

