



22 Woodbury Park Drive Mardi NSW

4 3 2

This beautiful family home has recently undergone 2 bathroom renovations and has had new carpet laid, making it ideal for the buyer who is looking to move in and not have to do a thing.

The home offers 4 generous bedrooms, all with built-in robes, a walk-in robe and en-suite to the master, a large 3 way bathroom, formal lounge and dining rooms, a spacious kitchen, family room, 3rd bathroom off the laundry and a double garage with a remote door and internal entry.

Other features include:

- Ducted air-conditioning.
- Ceiling fans throughout the home.
- Large undercover entertaining area.
- Spacious level yard.

Price : \$ 706,500
Land Size : 474.6 sqm
View : <https://www.coastwidedfn.com.au/sale/nsw/central-coast-region/mardi/residential/house/5899952>



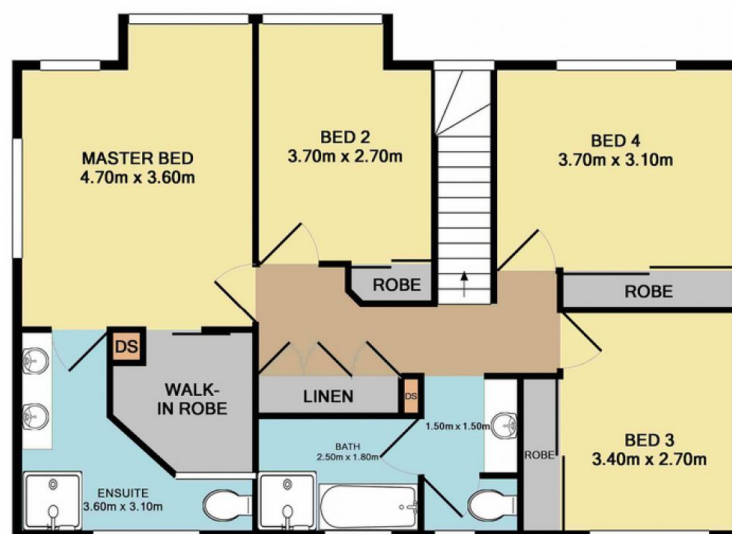
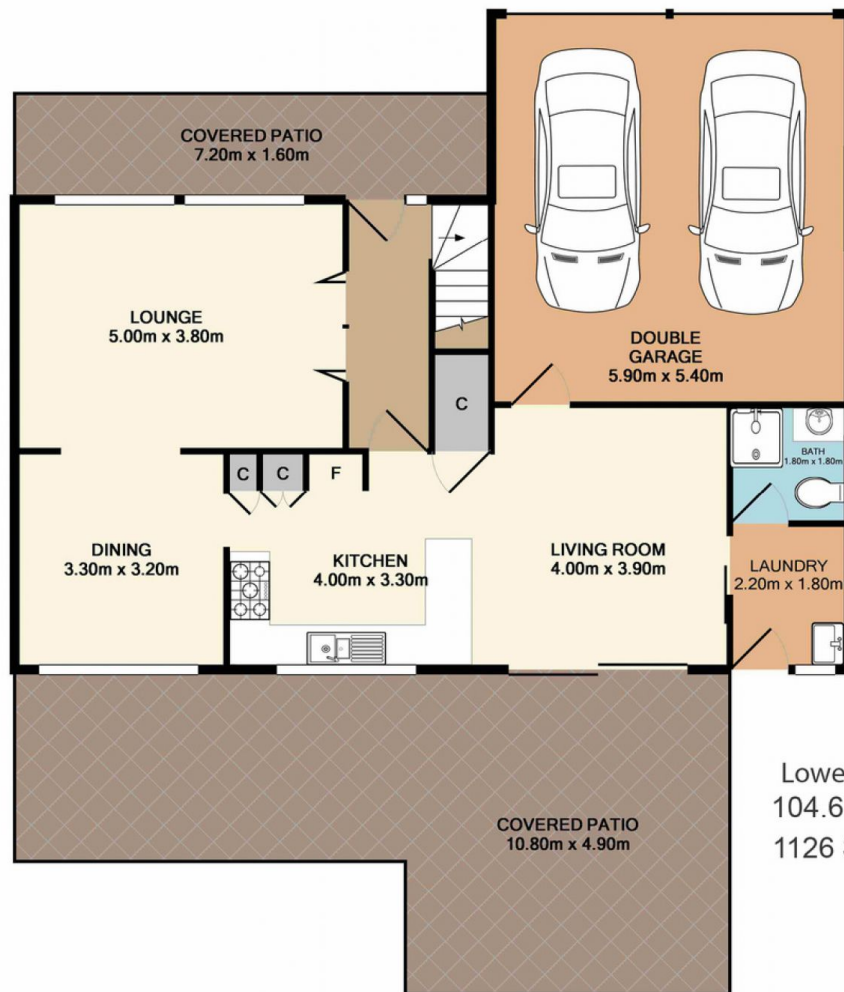
David Manuelle
02 4353 1999



David Want
0402 810 831

<https://www.coastwidedfn.com.au>

We sell, rent and manage Real Estate, Residential, Lifestyle and Commercial across the Central Coast



Total Approx. Floor Area 184.8 SQ.M. 1989 SQ.FT.

Measurements are approximate. Not to scale. For illustrative purposes only. Boundaries are approximate.

SITE PLAN

