



30 Connemara Street Wadalba NSW

3 2 2

Located in the popular Owl Park Estate of Wadalba, this charming home is the perfect opportunity for those looking to enter the market.

Featuring 3 bedrooms all with built-in robes and an en-suite to the main.

The spacious living areas including a combined lounge and dining room plus a large family room off the well-appointed kitchen. The family room opens onto a large deck which flows onto the low maintenance yard.

The home comes complete with air conditioning, a double garage with single drive thru access, a solar system and alarm system.

Price : \$ 575,000

Land Size : 591 sqm

View : <https://www.coastwidefn.com.au/sale/nsw/central-coast-region/wadalba/residential/house/5789071>



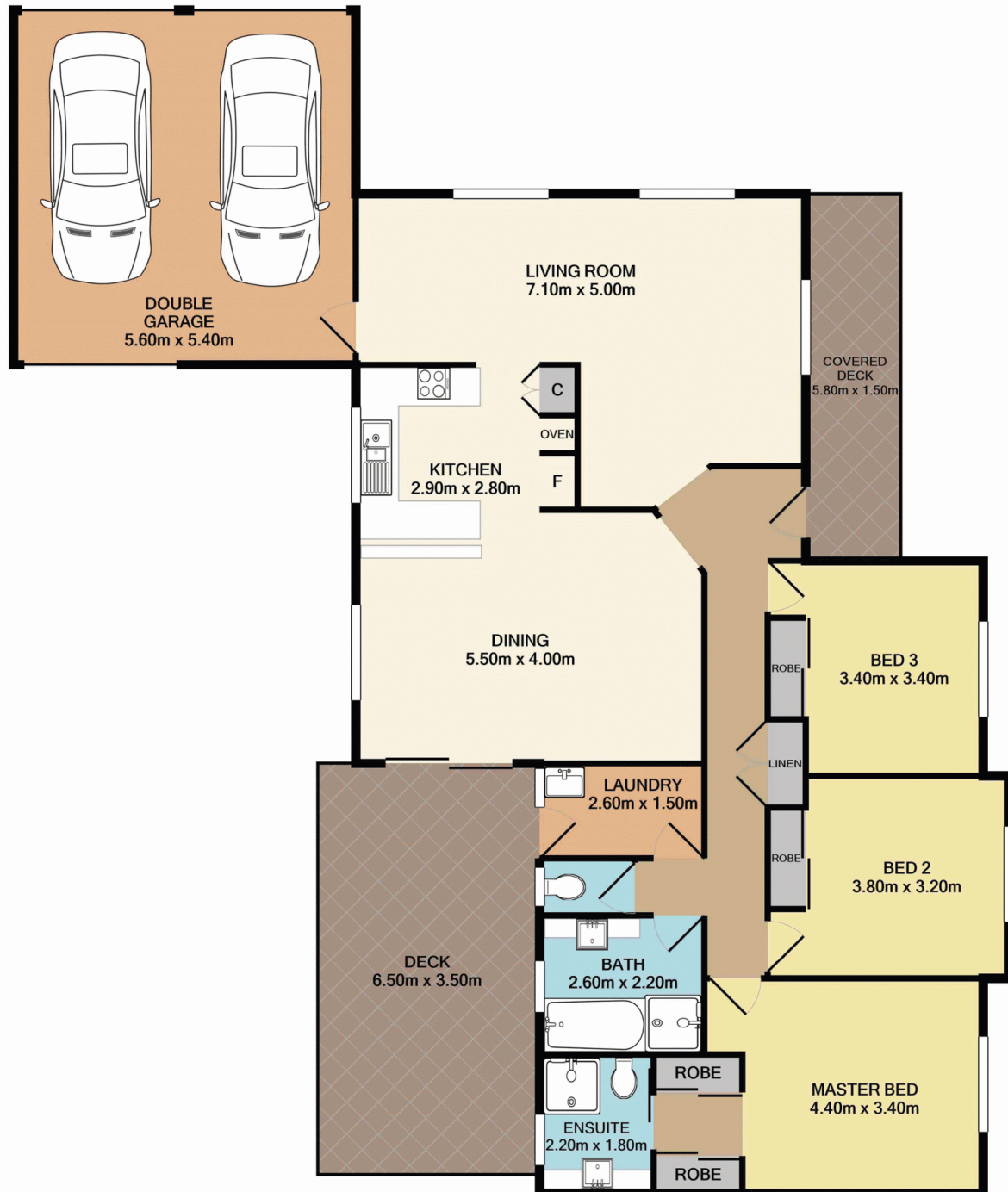
David Manuelle
02 4353 1999

<https://www.coastwidefn.com.au>

We sell, rent and manage Real Estate, Residential, Lifestyle and Commercial across the Central Coast

SITE PLAN





Total Approx. Floor Area 152.0 SQ.M. 1636 SQ.FT.

Measurements are approximate. Not to scale. For illustrative purposes only. Boundaries are approximate.