



227 Lakedge Avenue Berkeley Vale NSW

6 🏠 3 🚗 3 🚗

Set upon a 809 sqm block on the shores of Tuggerah Lake this waterfront reserve property offers a large established home with multiple living options and an uninterrupted outlook with views across the lake to The Entrance.

Price : \$ 945,000
Land Size : 809 sqm
View : <https://www.coastwidefn.com.au/sale/nsw/central-coast-region/berkeley-vale/residential/house/5778814>

Split across two levels the home offers a versatile floor plan to suit multiple families and living arrangements all under the one roof.

The top floor offers 4 bedrooms, 2 bathrooms, kitchen, living and dining room that opens onto a large covered entertaining deck. With stunning lake views from all of the living space as well as the deck and main bedroom, this level of the home has been designed to take in the absolute best of the stunning location.

Downstairs on the 1st floor, the home offers a 2 bedroom



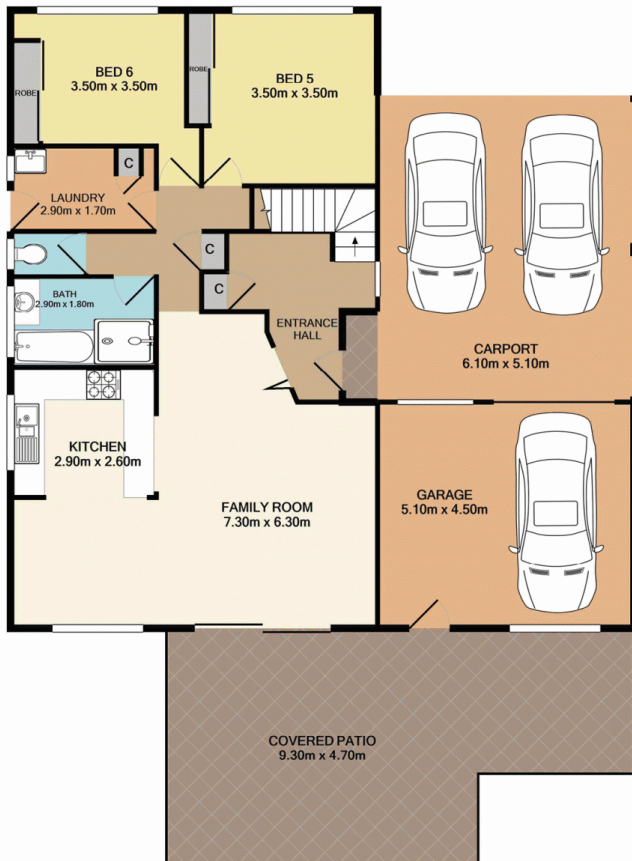
Adrian Simpson
02 4353 1999



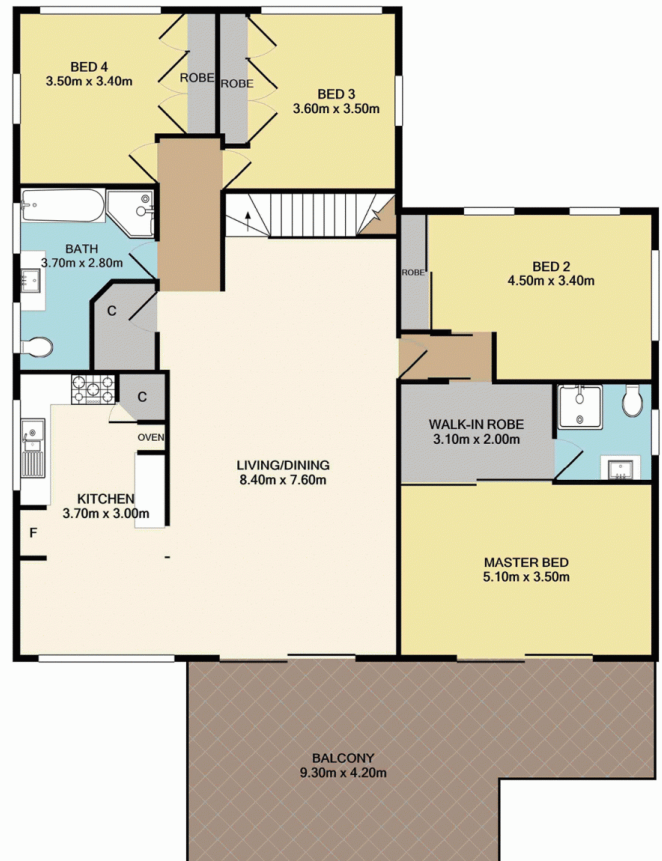
Skye Le Marseny
0403 271 122



227 Lakedge Avenue, Berkeley Vale



Lower Level
142.6 SQ.M.
1535 SQ.FT.



Upper Level
143.4 SQ.M.
1544 SQ.FT.

Total Approx. Floor Area 286.0 SQ.M. 3079 SQ.FT.

Measurements are approximate. Not to scale. For illustrative purposes only. Boundaries are approximate.

SITE PLAN

