



### 238 Woodbury Park Drive Mardi NSW

4 2 2

This quality architectural designed family home offers size and functionality throughout, combined with quality inclusions that are rarely seen. The home offers a total of four bedrooms with two and a half bathrooms including the master with en-suite and a powder room on the ground floor. Generous living areas for all the family include open plan lounge and dining off the kitchen plus a large rumpus with vaulted ceilings opening onto the outdoor entertaining area.

- Open plan kitchen with ample bench space and breakfast bar seating.
- Sprawling living and dining areas with direct access to your covered entertainment area.
- Fully ducted air conditioning throughout both levels including numerous zonings for energy efficiency.
- Master bedroom includes walk-in robe and en-suite.

**Price** : \$ 720,000  
**Land Size** : 594 sqm  
**View** : <https://www.coastwidedfn.com.au/sale/nsw/central-coast-region/mardi/residential/house/5624212>



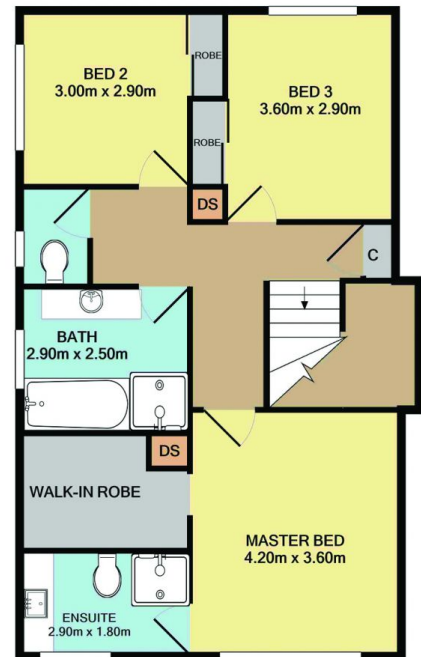
**Michael Eslick**  
0402 810 831



**David Manuelle**  
02 4353 1999

<https://www.coastwidedfn.com.au>

We sell, rent and manage Real Estate, Residential, Lifestyle and Commercial across the Central Coast

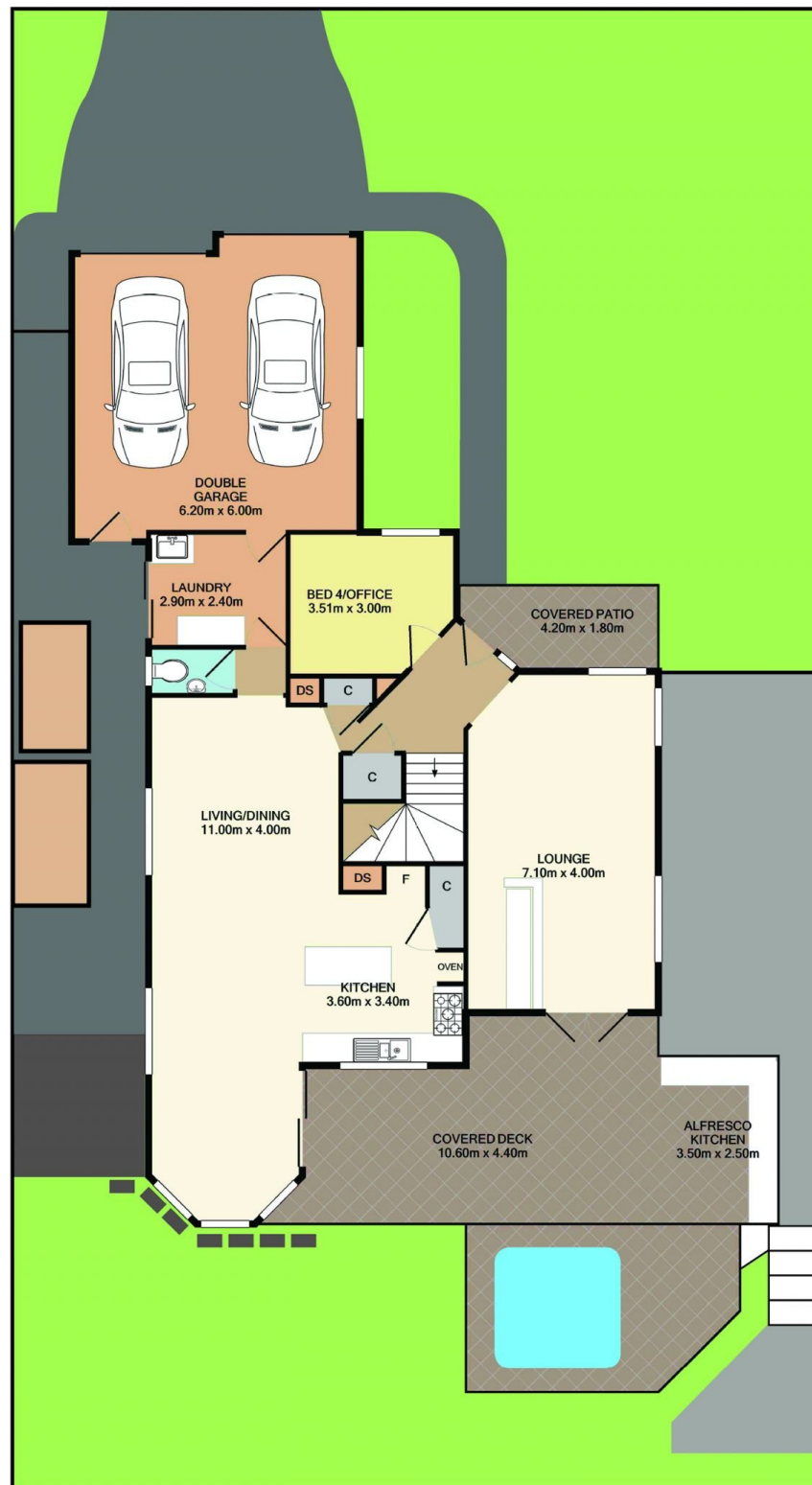


Total Approx. Floor Area 219.4 SQ.M. 2362 SQ.FT.

Measurements are approximate. Not to scale. For illustrative purposes only. Boundaries are approximate.



## SITE PLAN



Measurements are approximate. Not to scale. For illustrative purposes only. Boundaries are approximate.