



182 Woodbury Park Drive Mardi NSW

4  2  2 

Immaculately maintained, this spacious single-storey home enjoys an ideal location, a comfortable floor plan and will appeal to both the home buyer and investor.

Located within a short drive to Westfield Shopping Centre, Tuggerah Train Station and the M1 Motorway, this delightful home offers 4 bedrooms with an en-suite & walk-in robe to the main. The generous living space includes a spacious formal lounge and dining room as well as a family room off the well-appointed kitchen.

The home is complimented by a covered outdoor entertaining area, double garage with internal access and a private fully fenced yard.

Complete with updated kitchen appliances including a gas stove & oven, dishwasher, ducted air conditioning and a

Price : \$ 675,000
Land Size : 553 sqm
View : <https://www.coastwidefn.com.au/sale/nsw/central-coast-region/mardi/residential/house/5624117>



Adrian Simpson
02 4353 1999

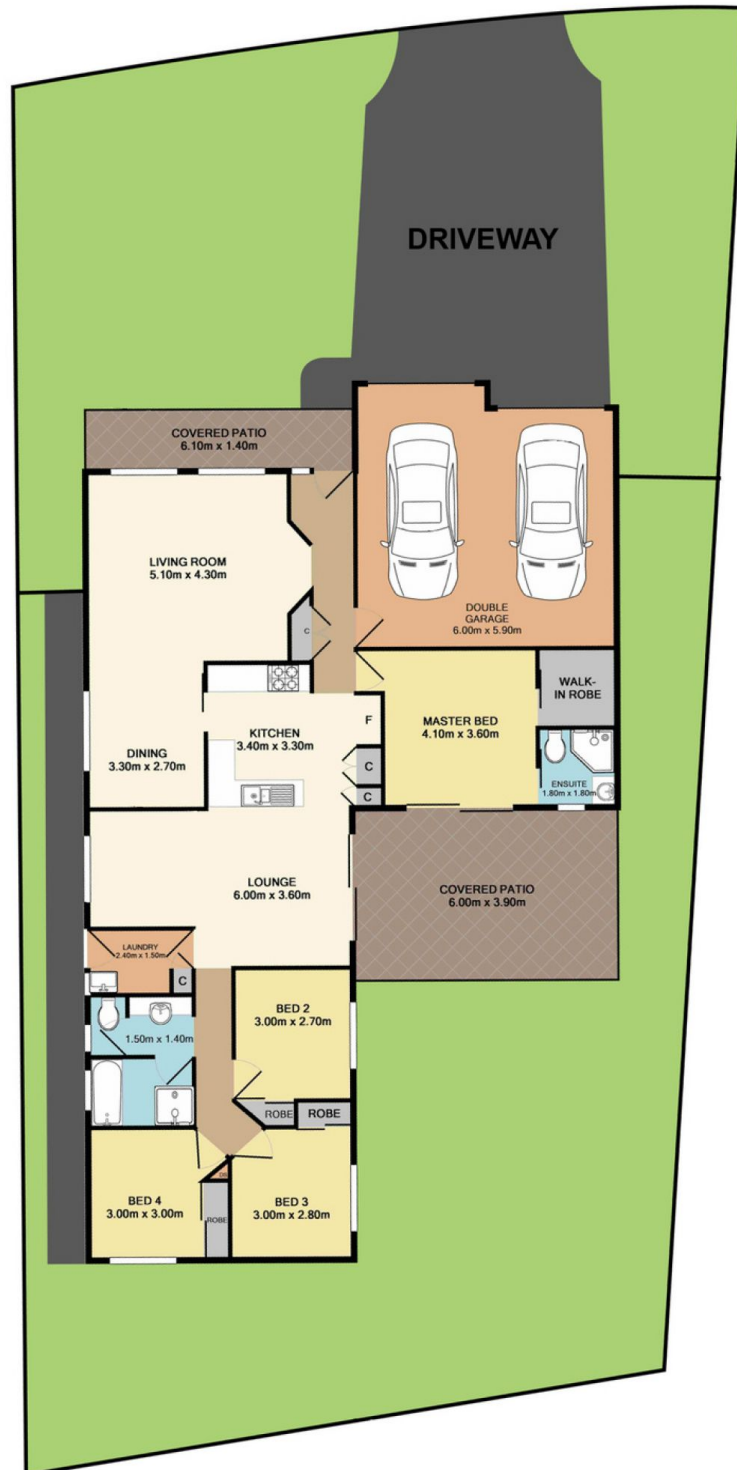
<https://www.coastwidefn.com.au>

We sell, rent and manage Real Estate, Residential, Lifestyle and Commercial across the Central Coast



182 Woodbury Park Drive, Mardi

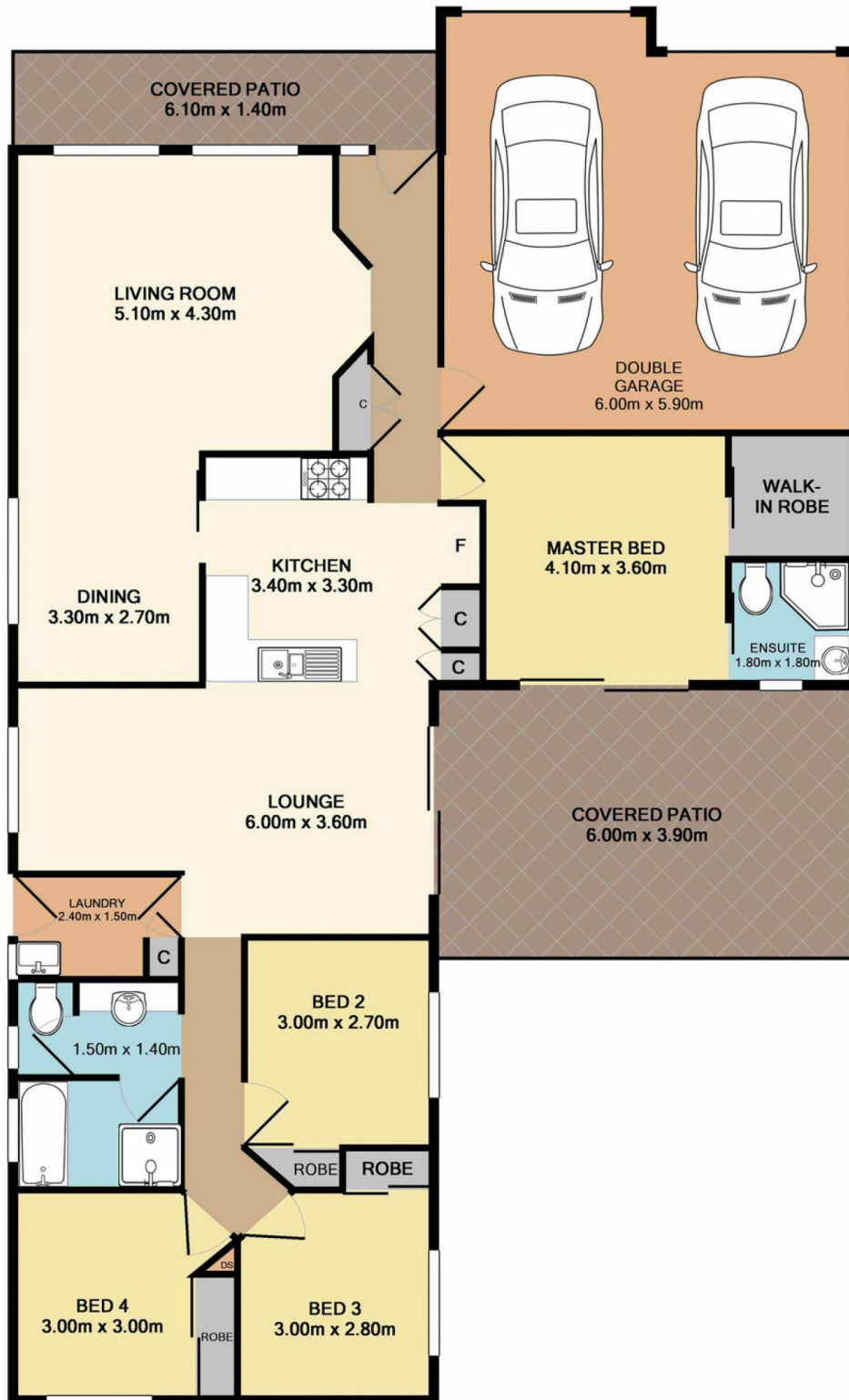
SITE PLAN



Measurements are approximate. Not to scale. For illustrative purposes only. Boundaries are approximate.



182 Woodbury Park Drive, Mardi



Total Approx. Floor Area 162.7 SQ.M. 1752 SQ.FT.

Measurements are approximate. Not to scale. For illustrative purposes only. Boundaries are approximate.