



28B Treeview Place Mardi NSW

3  1  1 

PLEASE NOTE: PROPERTY IS ALSO ON MARKET FOR SALE. LEASE PERIOD WILL BE 3 MONTHS TO START.

Needing quick access for freeway travel or do you work at Westfield and want to save the car and walk to work? This 3-bedroom duplex may be right up your alley!

Neat and tidy presentation, 2 built in robes, tiled open plan living and dining spaces, air conditioning, appliances in good condition, private fully fenced yard plus SLUG with internal access.

Property is currently on the market for sale, so prospective tenants may sign a short term lease, with the possibility to stay on longer if the property is sold to an investor!

Available from 25 June 2019

Land Size : 297 sqm
View : <https://www.coastwidefn.com.au/lease/nsw/central-coast-region/mardi/residential/semi-detached/5624114>



firstnational
REAL ESTATE

Coastwide

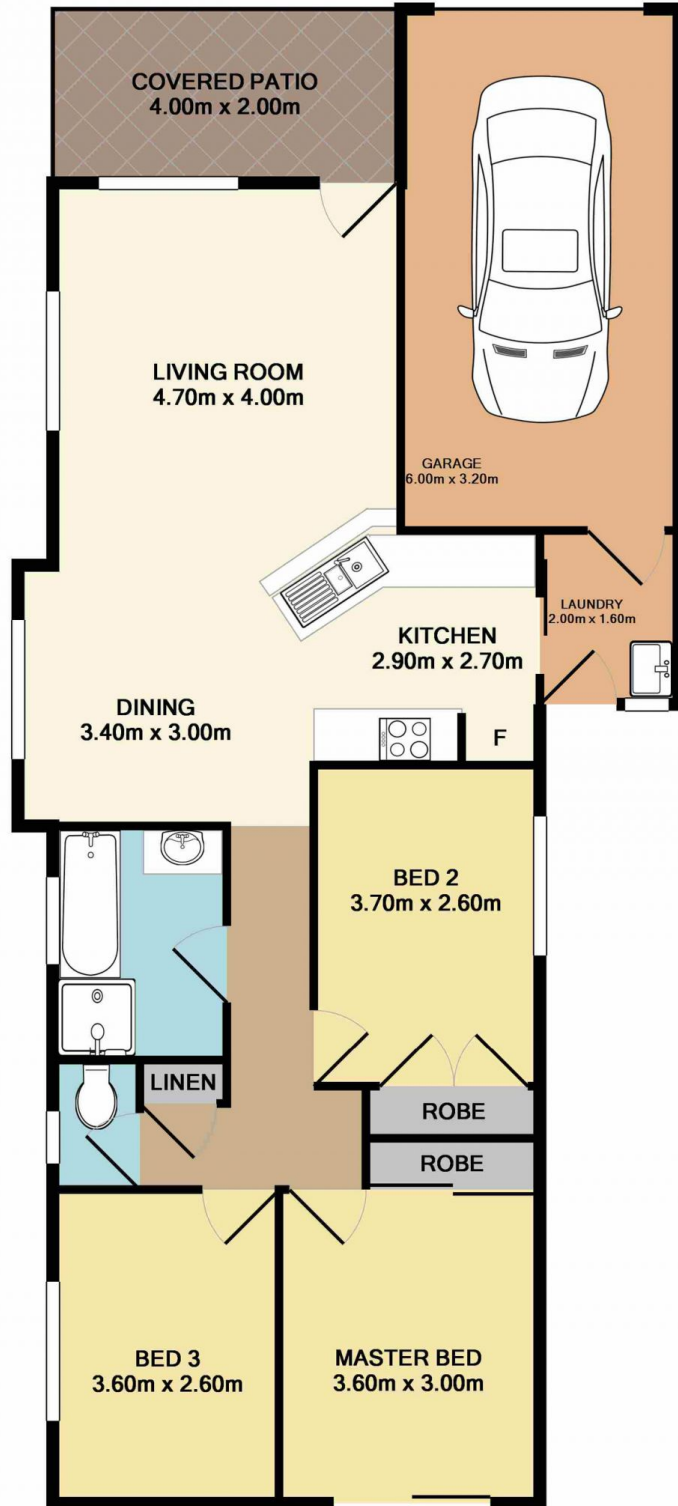
Property Management
02 4353 1999

<https://www.coastwidefn.com.au>

We sell, rent and manage Real Estate, Residential, Lifestyle and Commercial across the Central Coast



28B Treeview Place, Mardi



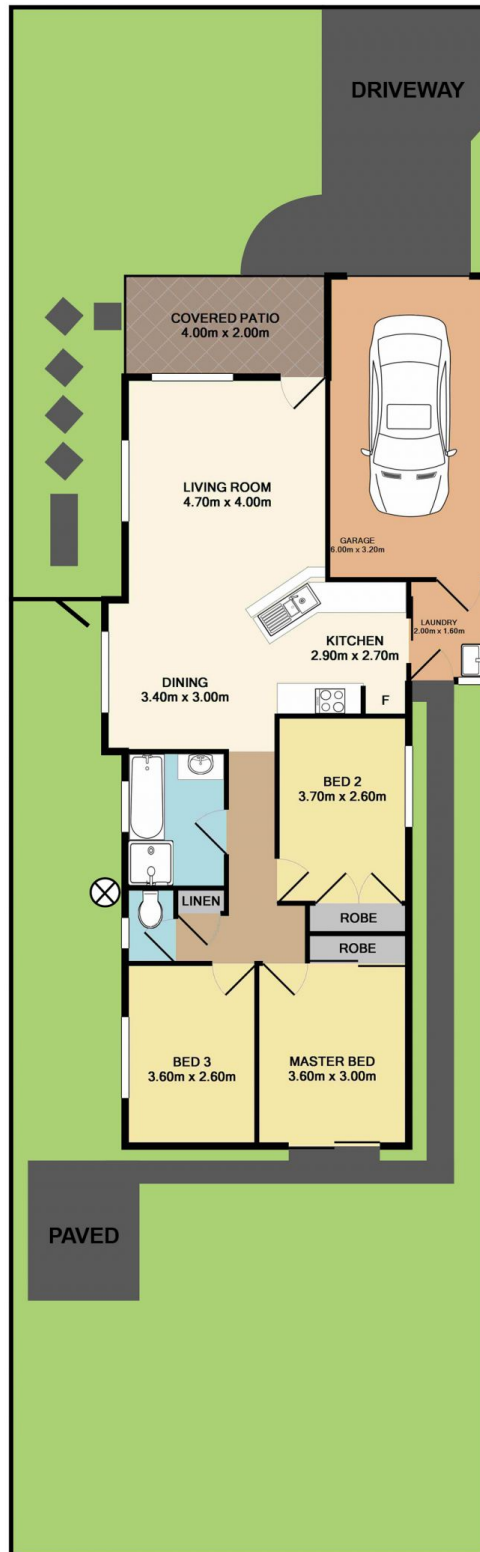
Total Approx. Floor Area 102.3 SQ.M. 1101 SQ.FT.

Measurements are approximate. Not to scale. For illustrative purposes only. Boundaries are approximate.



28B Treeview Place, Mardi

SITE PLAN



Measurements are approximate. Not to scale. For illustrative purposes only. Boundaries are approximate.