



### 28B Treeview Place Mardi NSW

3 1 1

This delightful single-storey home offers a comfortable floor plan, an excellent location and a great opportunity for the home buyer or the investor.

The home features 3 generous bedrooms, 2 with robes, a neat functional kitchen, separate lounge and dining, air conditioning, a private fully fenced yard, internal laundry and a single garage with internal access.

Set in an ideal location, the home is only a short level walk to Westfield Shopping Centre and Tuggerah Train Station.

Investors will enjoy a rent return of \$390 - \$420 per week in a prime area with a low vacancy rate.

This is a wonderful opportunity to purchase a fantastic property in a sought after location positioned within close

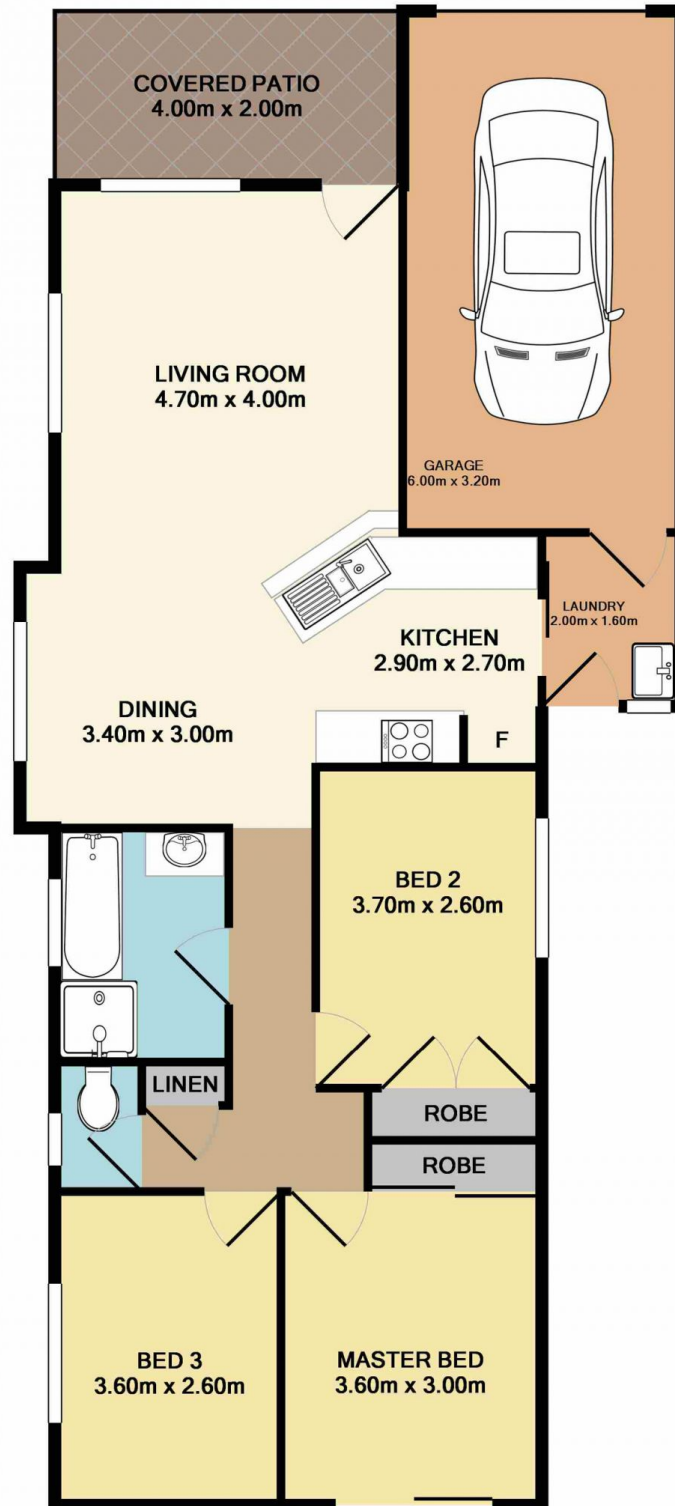
**Price** : \$ 485,000  
**Land Size** : 297 sqm  
**View** : <https://www.coastwidefn.com.au/sale/nsw/central-coast-region/mardi/residential/semi-detached/5624103>



**Adrian Simpson**  
**02 4353 1999**

<https://www.coastwidefn.com.au>

We sell, rent and manage Real Estate, Residential, Lifestyle and Commercial across the Central Coast



Total Approx. Floor Area 102.3 SQ.M. 1101 SQ.FT.

Measurements are approximate. Not to scale. For illustrative purposes only. Boundaries are approximate.

## SITE PLAN

