



242 Woy Woy Road Horsfield Bay NSW

5 🏠 3 🚗 3 🚗

Showcasing a clever floor-plan with multiple living zones split over two levels, this home is guaranteed to give you that WOW feeling you have been searching for!

Upstairs the home offers 4 generous bedrooms all with built in robes, walk in robe and ensuite to the master, main bathroom with spa bath, stunning kitchen with granite bench tops, tall wood timber floors throughout the living areas including the family room, spacious lounge room and formal dining.

Downstairs you will find the 5th bedroom/2nd lounge room, ample storage and combined 3rd bathroom - laundry.

The home also offers a 3 car garage with remote doors and work shop, ducted air conditioning, 1.5kw solar system and an alarm system.

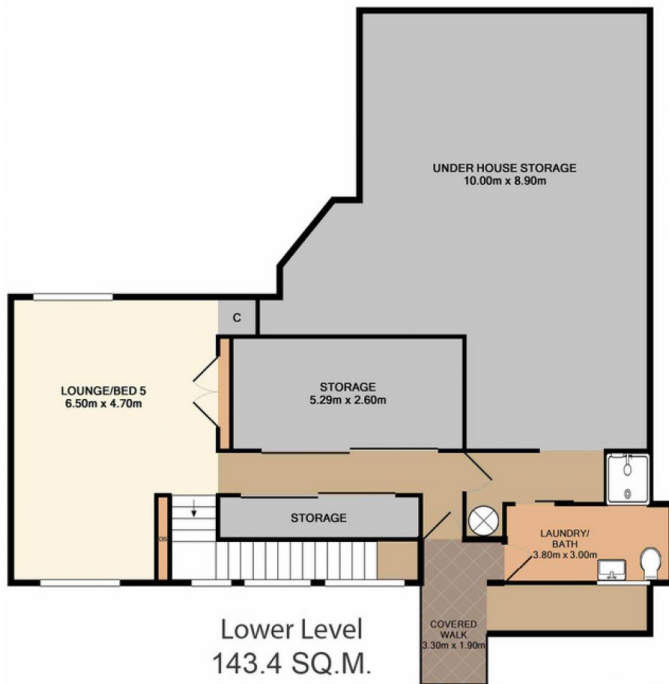
Land Size : 834.7 sqm
View : <https://www.coastwidedfn.com.au/sale/nsw/central-coast-region/horsfield-bay/residential/house/5624051>



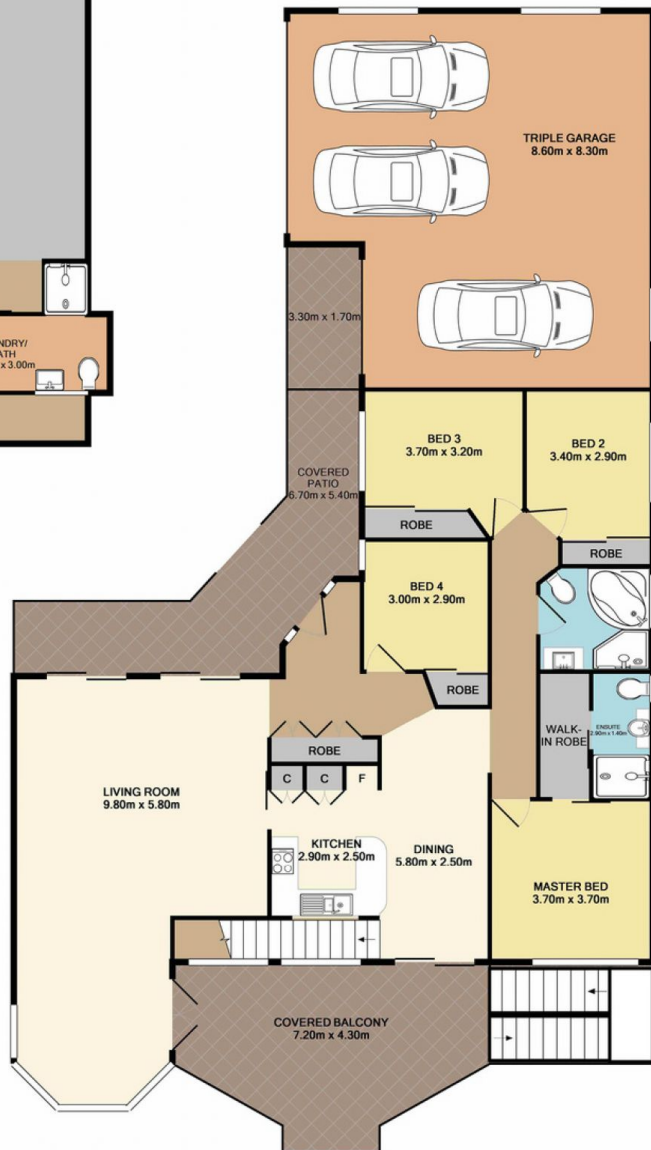
David Manuelle
02 4353 1999

SITE PLAN





Lower Level
 143.4 SQ.M.
 1544 SQ.FT.



Upper Level
 216.9 SQ.M.
 2334 SQ.FT.

Total Approx. Floor Area 360.3 SQ.M. 3878 SQ.FT.

Measurements are approximate. Not to scale. For illustrative purposes only. Boundaries are approximate.