



22 Treelands Drive Jilliby NSW

4 3 2

Looking to escape suburbia? Here is a great opportunity to get the family out and on to a fantastic small acreage that is still just minutes from all local services.

Set back from the road on approximately 1.25 acres, this well presented 4 bedroom home has so much to offer. All style and comfort, this home features vaulted ceilings in an open planned lounge/dining area, good sized kitchen with new appliances, and a large family room with a wood fire heater. The elevated main bedroom is gifted with en-suite, dressing area or an office, air conditioning and a balcony. The second bedroom has an en-suite and double built-in robe. Remaining are a good sized main bathroom and 2 further bedrooms, each with built-ins. The house also has a double garage with internal access.

- 4 bedroom, 3 bathroom solid brick and tile home

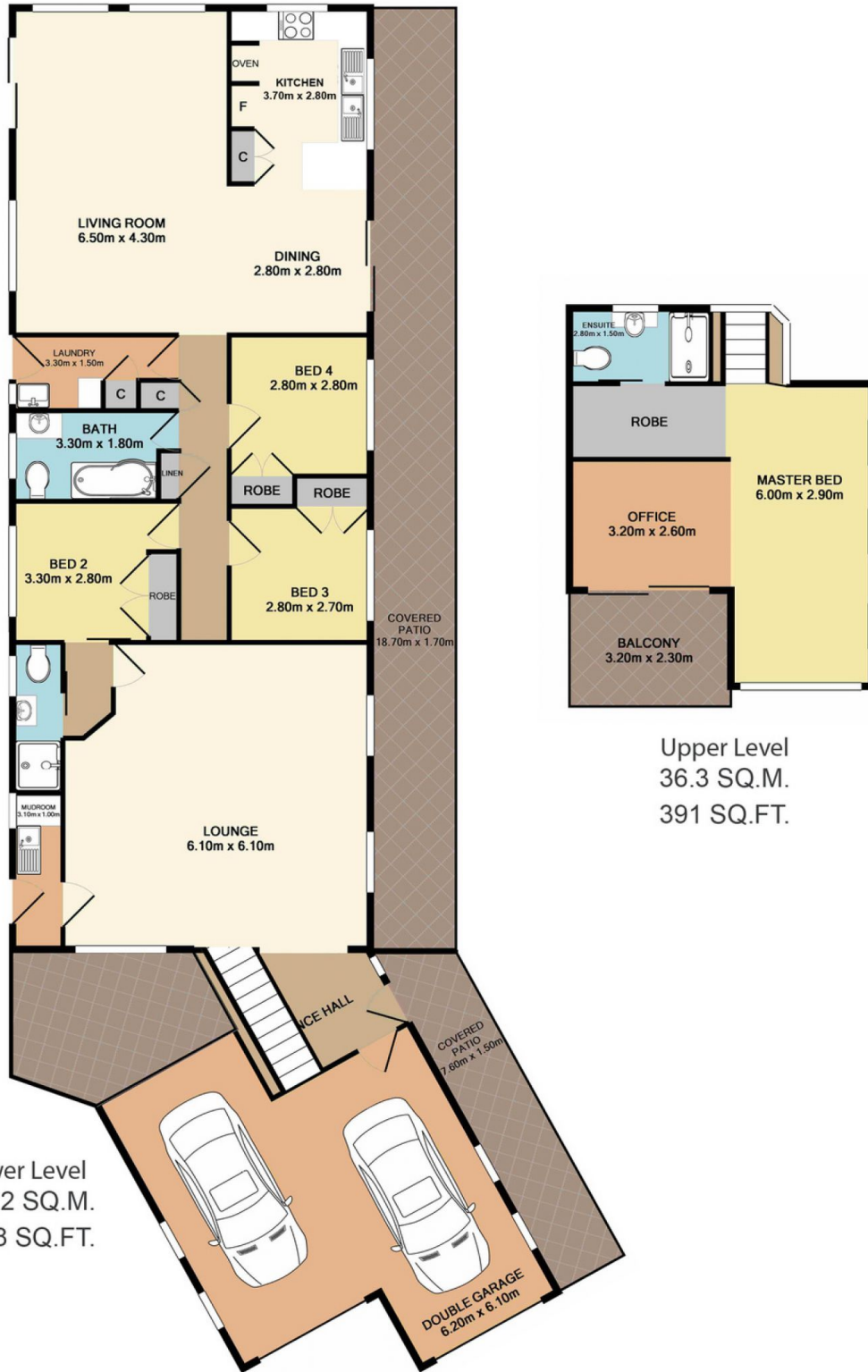
Price : \$ 775,000
Land Size : 5058.57 sqm
View : <https://www.coastwidefn.com.au/sale/nsw/central-coast-region/jilliby/residential/house/5624023>



Michael Eslick
0402 810 831

<https://www.coastwidefn.com.au>

We sell, rent and manage Real Estate, Residential, Lifestyle and Commercial across the Central Coast



Total Approx. Floor Area 214.5 SQ.M. 2309 SQ.FT.

Measurements are approximate. Not to scale. For illustrative purposes only. Boundaries are approximate.