



8 Colblack Close Tacoma NSW

3 1 1

Located on the edge of the peaceful suburbs of Tacoma and the lesser known Rocky Point this comfortable home offers a unique floor plan and a charming multi-level design.

Set opposite the natural bush reserve and a short stroll down to the Lake you will feel relaxed and at home as you walk through the front door.

A spacious lounge enjoys high ceilings and timber floors while taking in the bushy outlook. The dining room is a sun drenched nook that sits off the kitchen and opens onto the rear deck.

Tastefully updated the kitchen offers stone bench tops with dishwasher and ample cupboard space.

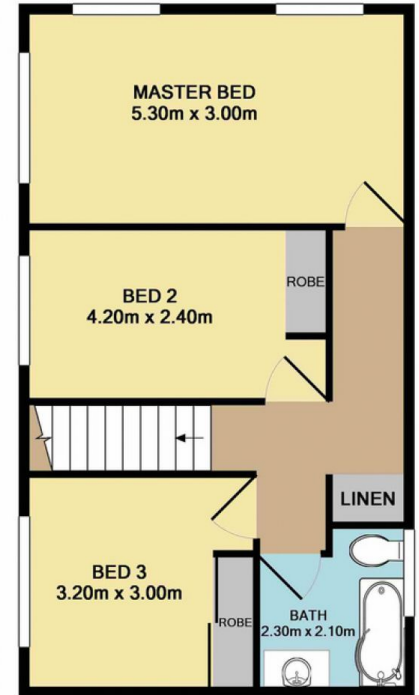
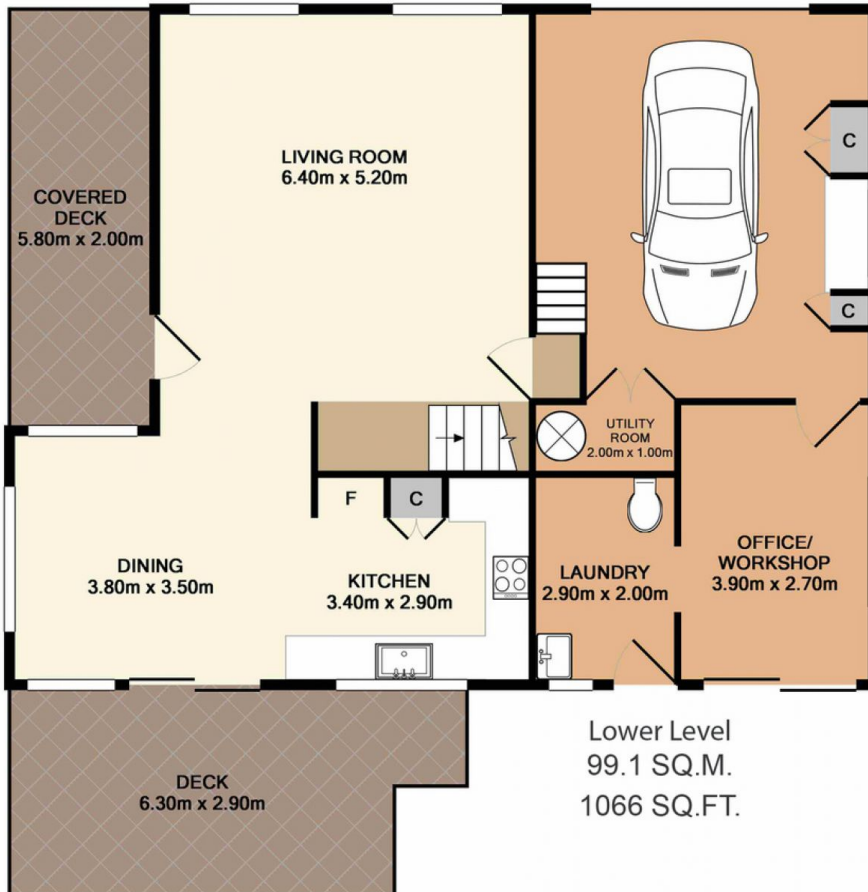
Price : \$ 510,000
Land Size : 469.5 sqm
View : <https://www.coastwidedfn.com.au/sale/nsw/central-coast-region/tacoma/residential/house/5624019>



Adrian Simpson
 02 4353 1999

<https://www.coastwidedfn.com.au>

We sell, rent and manage Real Estate, Residential, Lifestyle and Commercial across the Central Coast



Total Approx. Floor Area 148.9 SQ.M. 1603 SQ.FT.

Measurements are approximate. Not to scale. For illustrative purposes only. Boundaries are approximate.

SITE PLAN

