



## 42 Clydesdale Street Wadalba NSW

4 2 2

Enjoying a north facing aspect, this spacious family home boasts a comfortable floor plan that includes multiple living areas, generous sized bedrooms and a stunning in-ground pool.

? Featuring 4 bedrooms all with built in robes. A huge master bedroom with en-suite.

? The living areas consist of a formal lounge and dining room, a family/meals room off the kitchen, spacious lounge overlooking the pool plus an additional lounge area upstairs.

? The private fully fenced backyard offers ample space for outdoor entertaining with family and friends and is complimented by the salt water in-ground pool and manicured gardens.

**Price** : \$ 640,000  
**Land Size** : 505.5 sqm  
**View** : <https://www.coastwidefn.com.au/sale/nsw/central-coast-region/wadalba/residential/house/5624000>



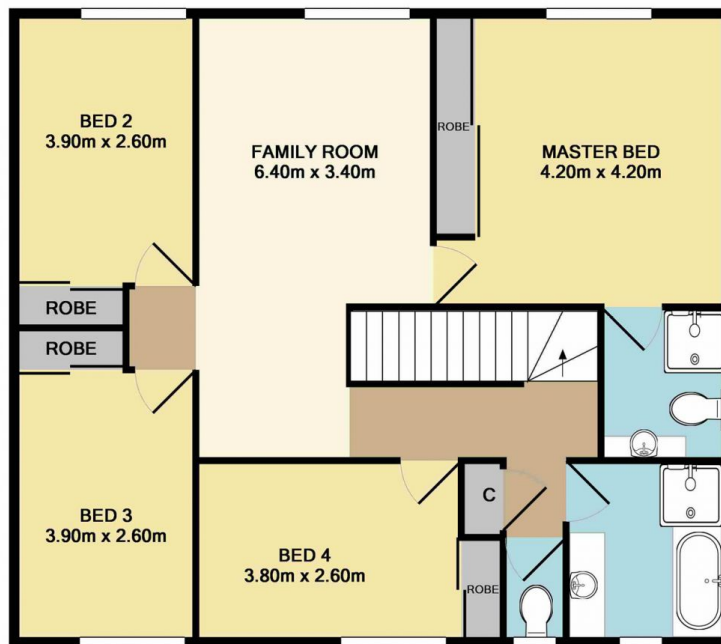
**Adrian Simpson**  
 02 4353 1999

<https://www.coastwidefn.com.au>

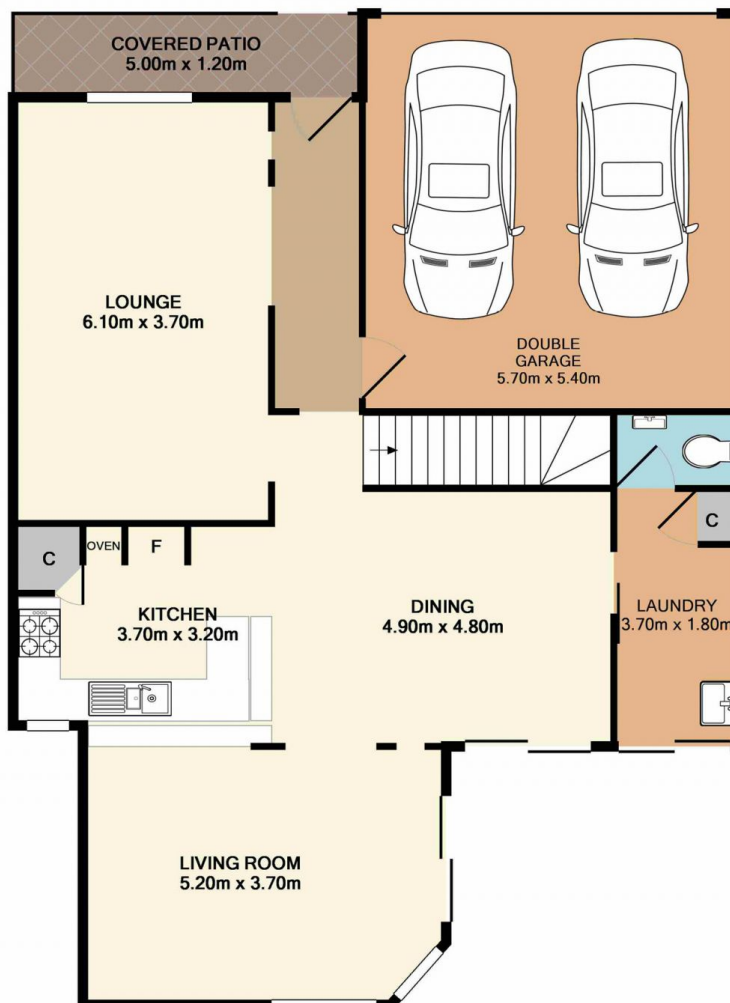
We sell, rent and manage Real Estate, Residential, Lifestyle and Commercial across the Central Coast



Upper Level  
91.8 SQ.M.  
988 SQ.FT.



Lower Level  
121.8 SQ.M.  
1311 SQ.FT.



Total Approx. Floor Area 213.6 SQ.M. 2299 SQ.FT.

Measurements are approximate. Not to scale. For illustrative purposes only. Boundaries are approximate.

## SITE PLAN

