



### 21 Rushmore Place Hamlyn Terrace NSW

4  2  2 

Located in the new Magnolia Estate is this stunning 2 year old Hudson home.

Features include 4 spacious bedrooms with an ensuite and walk in robe to the main.

The living area consists of an open plan kitchen and family room that opens onto the covered alfresco entertaining area plus a separate lounge room.

The home comes complete with a double garage with auto door, air conditioning, water tank and a private fully fenced backyard.

With great tenants under lease until the 21st March, 2019 investors can relax knowing they are getting a great return on \$520 per week.

**Price** : \$ 610,000

**Land Size** : 457.5 sqm

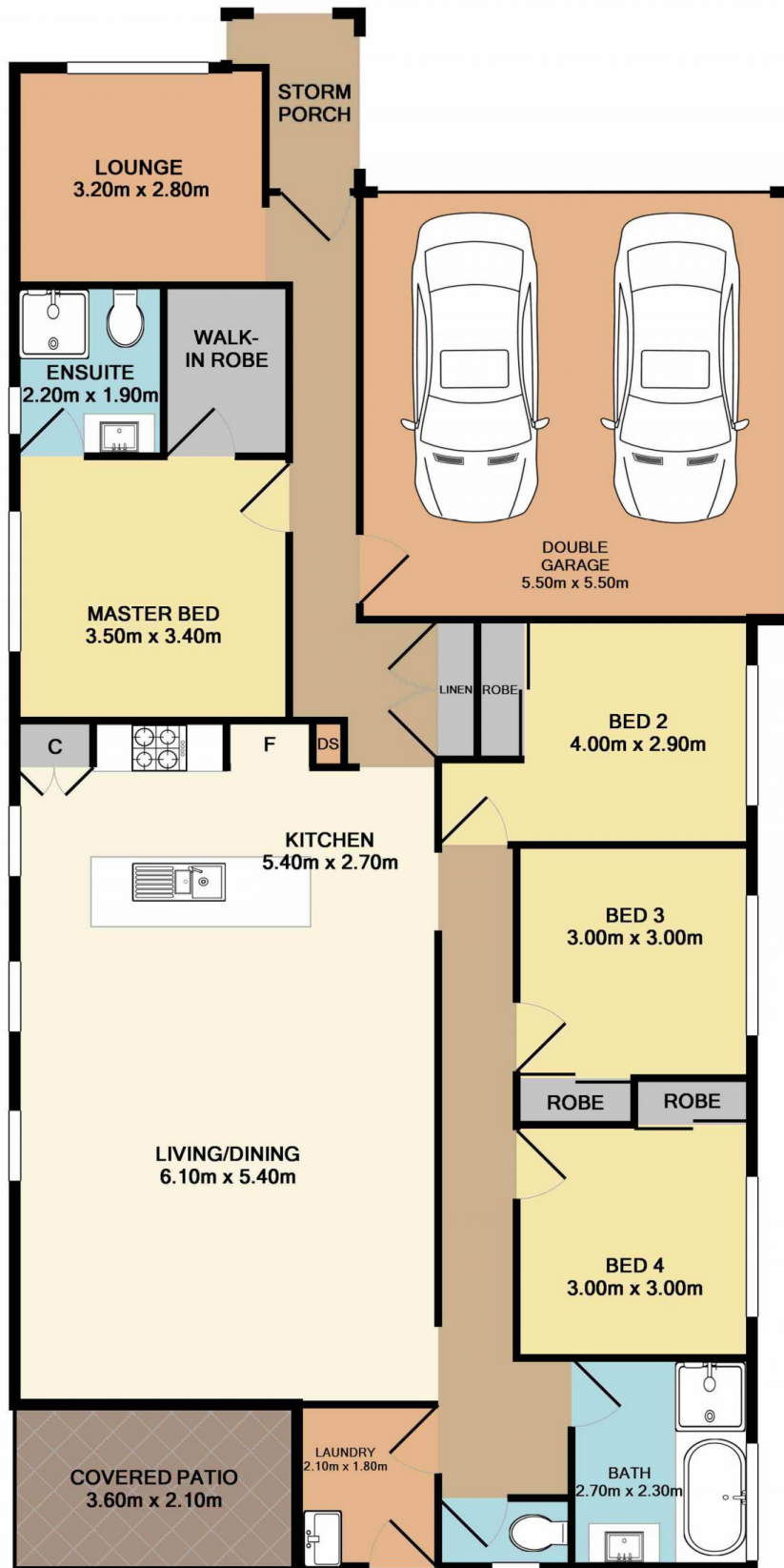
**View** : <https://www.coastwidefn.com.au/sale/nsw/central-coast-region/hamlyn-terrace/residential/house/5623934>



**David Manuelle**  
02 4353 1999

<https://www.coastwidefn.com.au>

We sell, rent and manage Real Estate, Residential, Lifestyle and Commercial across the Central Coast



Total Approx. Floor Area 169.8 SQ.M. 1828 SQ.FT.

Measurements are approximate. Not to scale. For illustrative purposes only. Boundaries are approximate.

## SITE PLAN

