



**623 Brush Creek Road Cedar Brush Creek NSW**

3 3

This country "gem" is set amongst just over 67 private acres with approximately 20 acres of rolling green pastures and the remaining native bushland.

The homestead has 3 large bedrooms, 2 with en-suites and walk-in wardrobes and a large open plan living area with an open wooden fireplace, which opens onto a spacious outdoor entertaining deck that overlooks the sprawling acres. There is a second lounge room with a combustion fire place. All with ducted air-conditioning, gas cooking and ceiling fans.

The property also boasts a resort style swimming pool and spa, a shed for storage, multiple paddocks for horses or cattle, a small personal orchard, fully fenced and has a fresh water creek meandering through the property.

**Price** : \$ 1,120,000  
**Land Size** : 67 Acres  
**View** : <https://www.coastwidefn.com.au/sale/nsw/central-coast-region/cedar-brush-creek/residential/acreagesemirural/5623899>



**Michael Eslick**  
0402 810 831

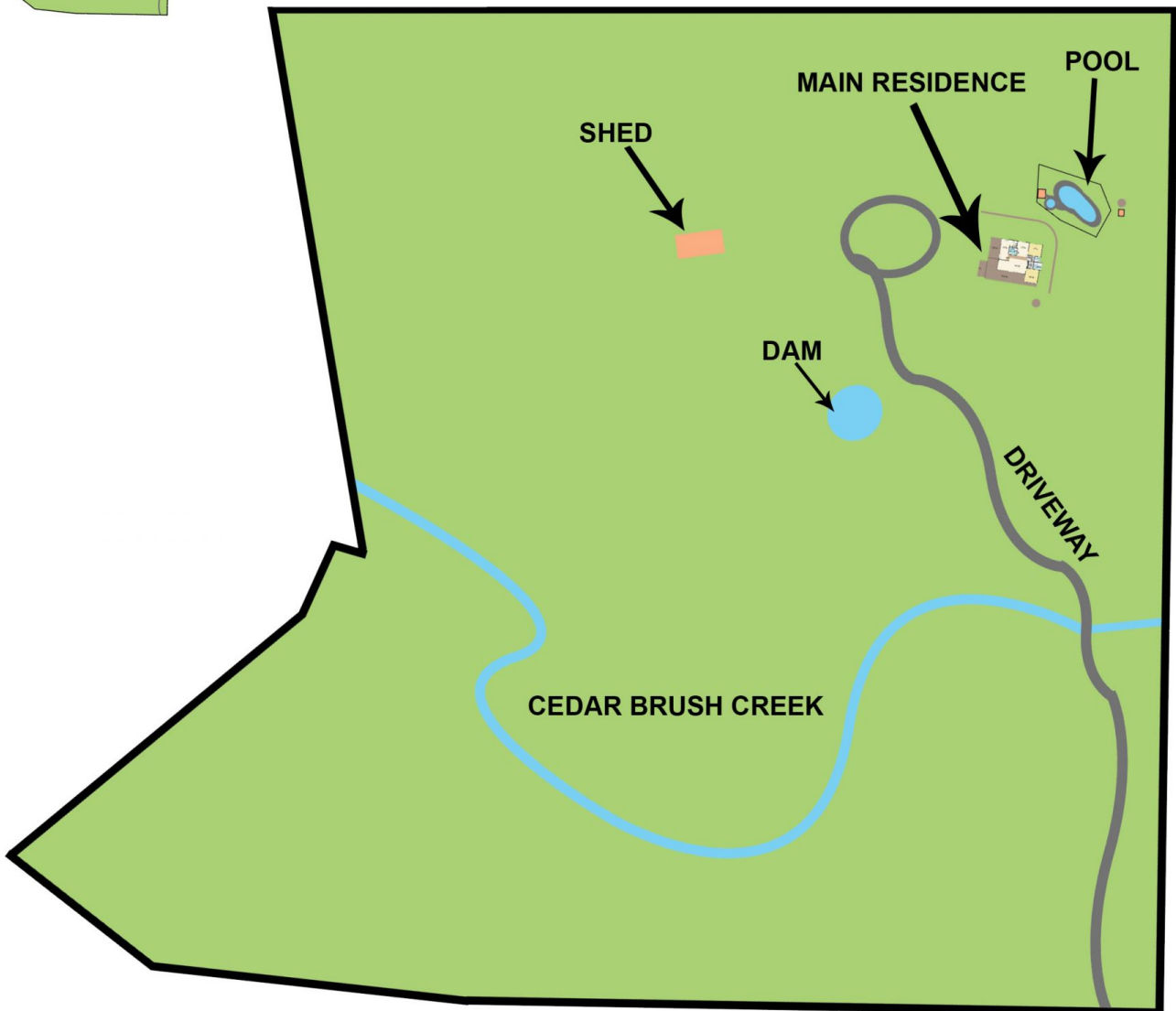
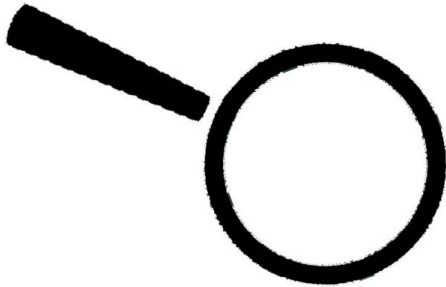
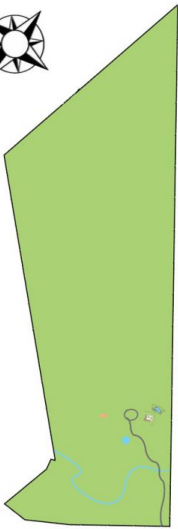


**Skye Le Marseny**  
0403 271 122

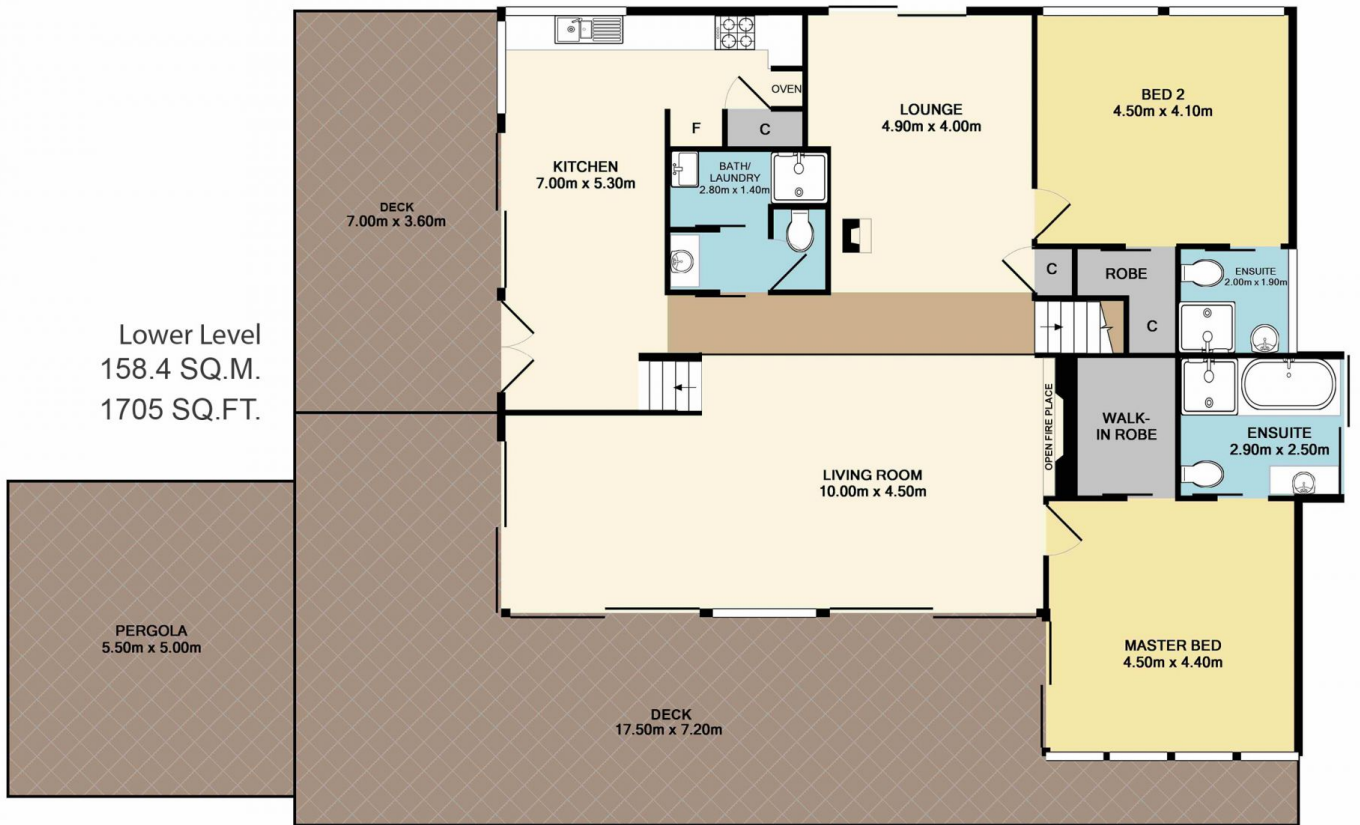
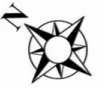


# 623 Brush Creek Road, Cedar Brush Creek

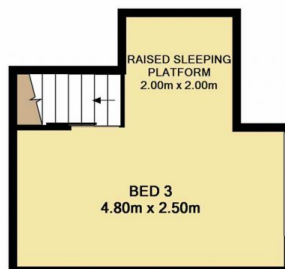
## SITE PLAN



Measurements are approximate. Not to scale. For illustrative purposes only. Boundaries are approximate.



Upper Level  
17.9 SQ.M.  
193 SQ.FT.



Total Approx. Floor Area 176.3 SQ.M. 1897 SQ.FT.

Measurements are approximate. Not to scale. For illustrative purposes only. Boundaries are approximate.