

23 Rushmore Place Hamlyn Terrace NSW

4 2 2

Ideal for the home buyer and investor, this fantastic home is located at the end of a cul-de-sac, is set amongst other quality homes and has a beautiful outlook over natural park lands and a pond.

Offering 4 generous bedrooms, master with walk in robe and en-suite, open plan living off the modern kitchen, a media room, study nook, split system air conditioning, internal entry from the double garage, under cover entertaining area and a spacious back yard.

To receive your free information e-book on this property please SMS '23RUSHMORE' to 0429 272 028

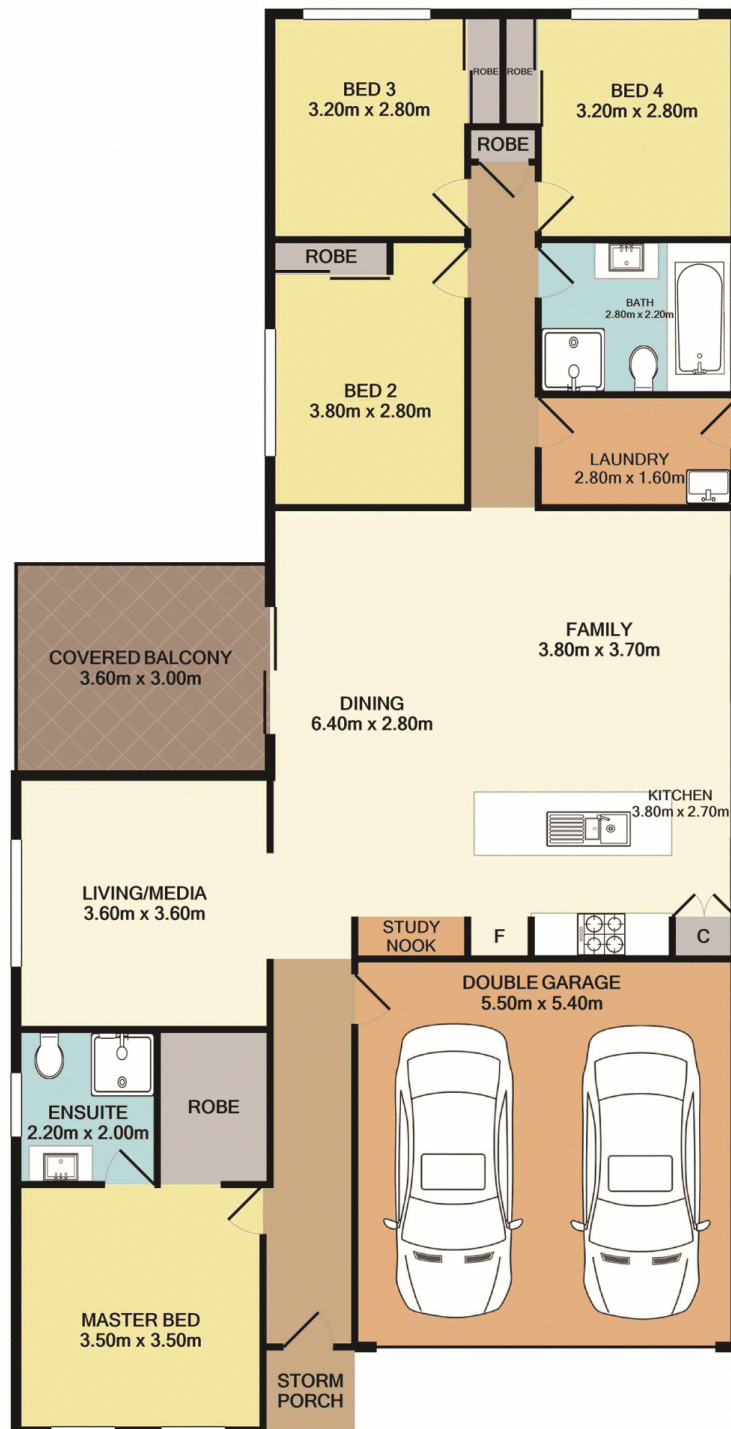
Price : \$ 612,000
Land Size : 457.5 sqm
View : <https://www.coastwidefn.com.au/sale/nsw/central-coast-region/hamlyn-terrace/residential/house/5606786>



David Manuelle
02 4353 1999

<https://www.coastwidefn.com.au>

We sell, rent and manage Real Estate, Residential, Lifestyle and Commercial across the Central Coast



Total Approx. Floor Area 159.7 SQ.M. 1719 SQ.FT.

Measurements are approximate. Not to scale. For illustrative purposes only. Boundaries are approximate.

SITE PLAN

