



**16 Linga Longa Road Yarramalong NSW**

6 2 3

Set in the picturesque Yarramalong Village with a lush green outlook this home boasts a spacious floor plan to cater for the whole family.

The home offers a versatile two level floor plan. Upstairs features 4 bedrooms a bathroom, large open plan living, kitchen and a covered entertaining deck while downstairs offers 2 bedrooms, Kitchenette, bathroom, living room and a covered entertaining area.

The country style kitchen is the jewel of this home and offers a functional layout with 900mm cooktop and oven.

A large entertaining verandah on the top floor offers a pleasant outlook of your surrounds while the backyard is private and fenced to the creek.

**Price** : Guide \$1,100,000  
**Land Size** : 1330 sqm  
**View** : <http://www.coastwidefn.com.au/sale/nsw/central-coast-region/yarramalong/residential/house/7999085>

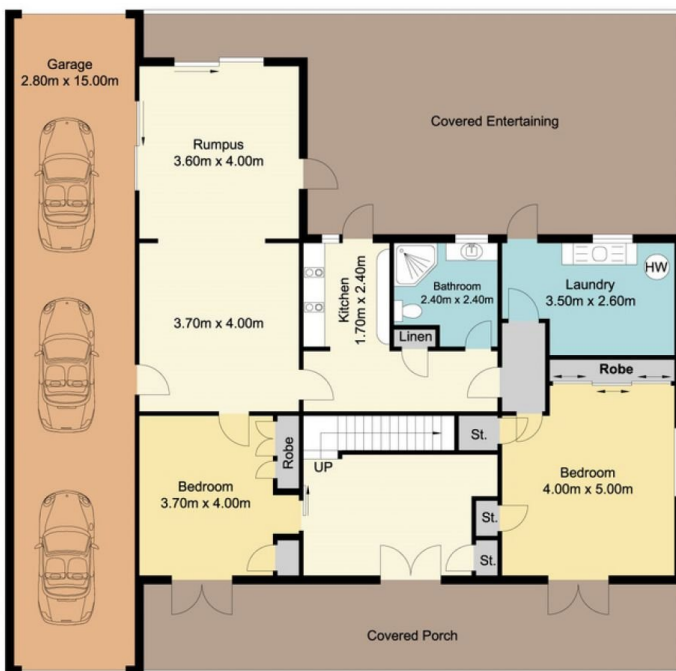
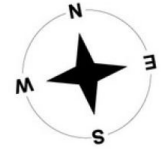


**Adrian Simpson**  
02 4353 1999



**David Want**  
0402 810 831

# 16 Linga Longa Road, Yarramalong



Ground Level



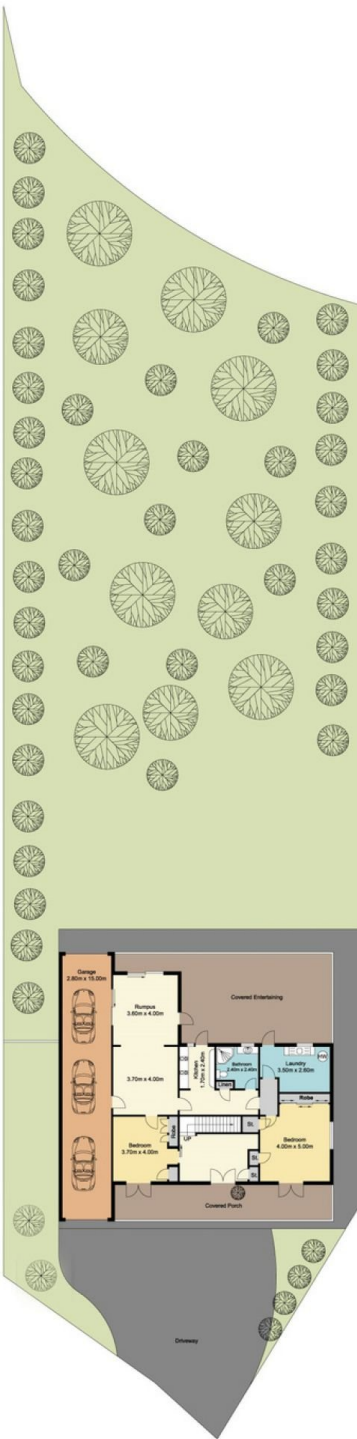
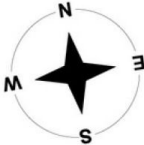
Level One

Total Approx Floor Area 275.96 sq.m

Measurements are approximate. Not to scale. For illustrative purposes only. Boundaries are approximate

# 16 Linga Longa Road, Yarramalong

## SITE PLAN



Total Approx Floor Area 275.96 sq.m

Measurements are approximate. Not to scale. For illustrative purposes only. Boundaries are approximate