



6/56-64 Pacific Highway Wyong NSW

Located in the heart of Wyong within a popular shopping arcade directly opposite Wyong Station, these premises offer accessible access in a convenient part of town.

Previously a pathology collection centre, the total size is 98m² made up of a spacious entry and reception area in the centre with offices around the perimeter. Ideally suited to medical services or professional office space this is the perfect position to establish your business in a busy and growing CBD.

Surrounded by a great mix of businesses within the centre there is a Medical Centre, accountant, psychologist as well as a café/bakery.

Includes ducted air conditioning, staff kitchenette and access to shared toilet facilities.

Price : \$3,600 per month inc gst & outgoings pm
View : <http://www.coastwidefn.com.au/lease/nsw/central-coast-region/wyong/commercial/retail/7983886>

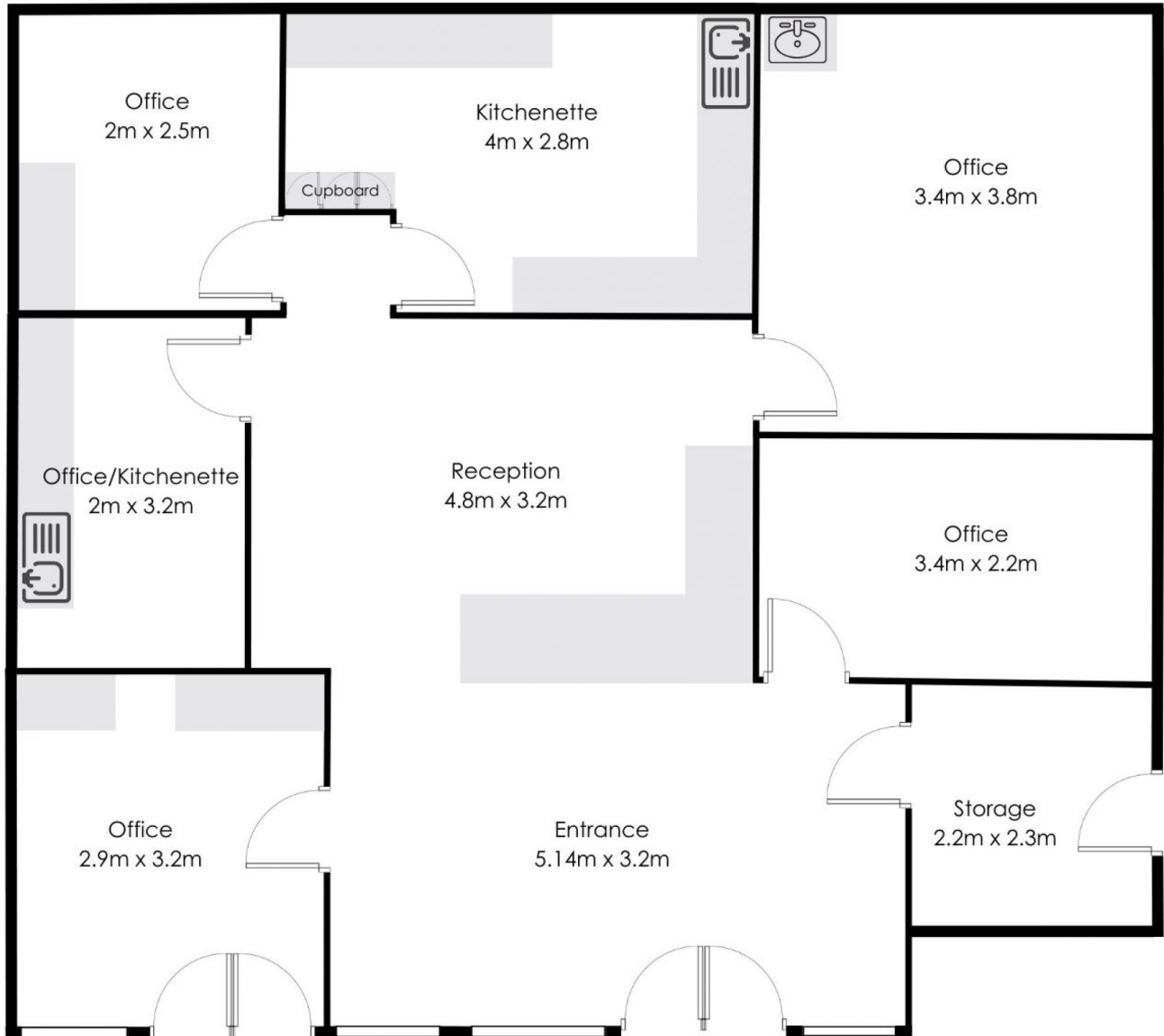


Adrian Simpson
02 4353 1999



David Manuelle
02 4353 1999

Suite 6/56-64 Pacific Highway, Wyong



**Total floor space:
98m² approx**

Measurements are approximate. Not to scale. For illustrative purposes only. Boundaries are approximate



firstnational
COMMERCIAL | Coastwide