

## 7/43 Pile Road Somersby NSW

2 🚗

An exceptional opportunity awaits to secure this new Industrial Warehouse at 7/43 Pile Road, Somersby. Featuring an impressive modern façade with great exposure within the Somersby Industrial Estate, this high clearance warehouse ensures ample space for various industrial applications and includes a showroom/reception area as well as a mezzanine with air conditioning that's ideal for office space. If you are seeking an investment opportunity, consider this prime industrial property.

Key features include:

\* Ground floor warehouse size approximately 246m<sup>2</sup> with an internal height up to 8.5 metres. Includes Reception/showroom area as well as disabled bathroom and kitchenette.

**Type** : Industrial  
**Price** : \$1M - \$1.1M  
**Land Size** : 310 sqm  
**View** : <http://www.coastwidefn.com.au/sale/nsw/central-coast-region/somersby/commercial/industrial/7975269>



**Adrian Simpson**  
02 4353 1999



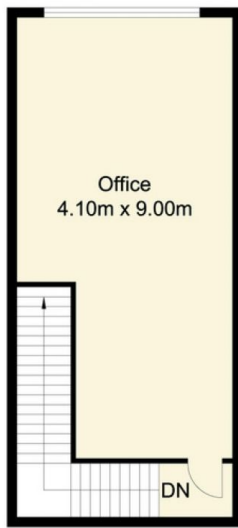
**David Manuelle**  
02 4353 1999

[For full version visit the website](http://www.coastwidefn.com.au)

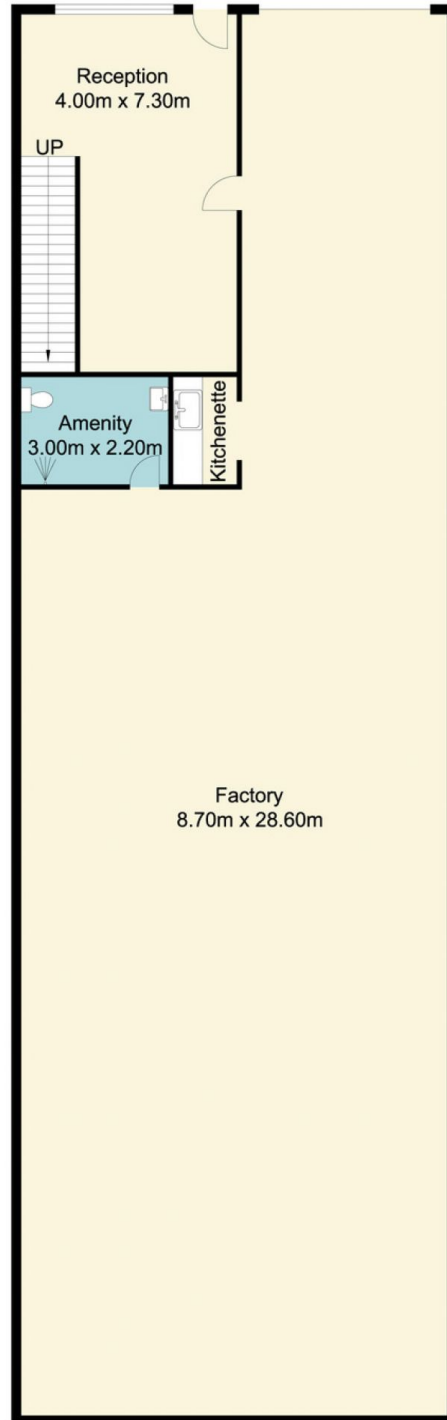
<http://www.coastwidefn.com.au>

We sell, rent and manage Real Estate, Residential, Lifestyle and Commercial across the Central Coast

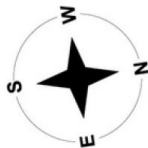
# 7/43 Pile Road, Somersby



First Floor



Ground Floor



Measurements are approximate. Not to scale. For illustrative purposes only. Boundaries are approximate