

48 Green Close Mardi NSW

3 1 1

Located within a short walk of Westfields shopping center & Tuggerah Station this ideally located home is one not to be missed.

Situated on a low maintenance block, this cozy, north facing home offers a light and bright open plan living area with split system air conditioning, a functional kitchen, bathroom suitable for disabled access, 3 bedrooms 2 with built in wardrobes, an under cover entertaining area and single lock up garage with automatic door.

The 3rd bedroom is located upstairs and would make a great home office or kids retreat.

Investors can expect a return in the vicinity of \$490 per week.

Price : \$ 622,000
Land Size : 249.4 sqm
View : <http://www.coastwidefn.com.au/sale/nsw/central-coast-region/mardi/residential/semi-detached/7918640>

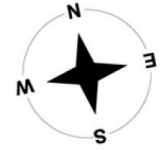
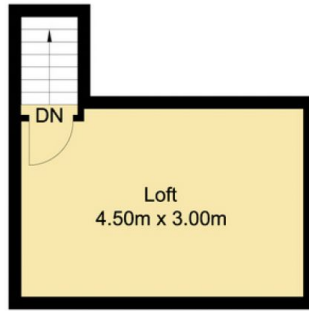


David Manuelle
02 4353 1999

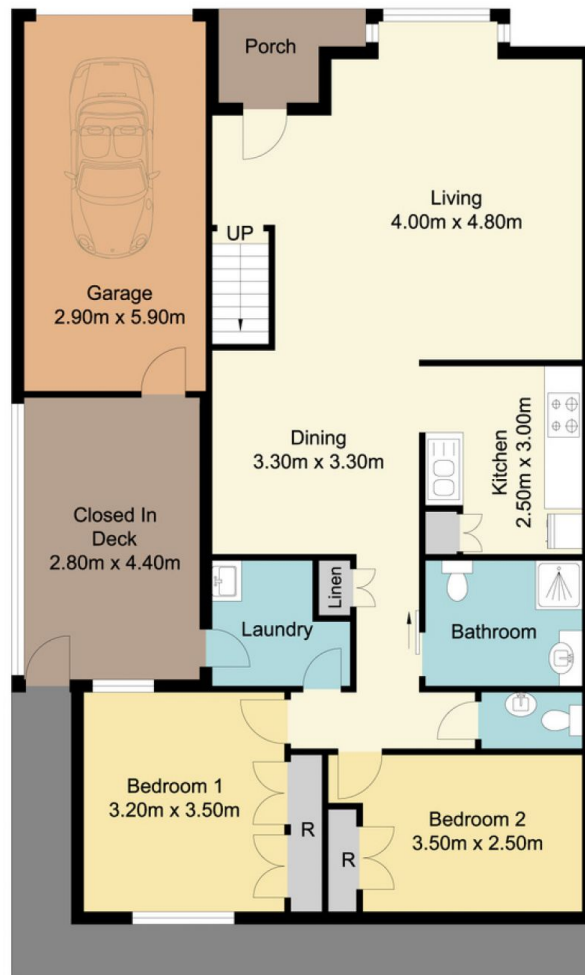


Adrian Simpson
02 4353 1999

48 Green Close, Mardi



First Floor



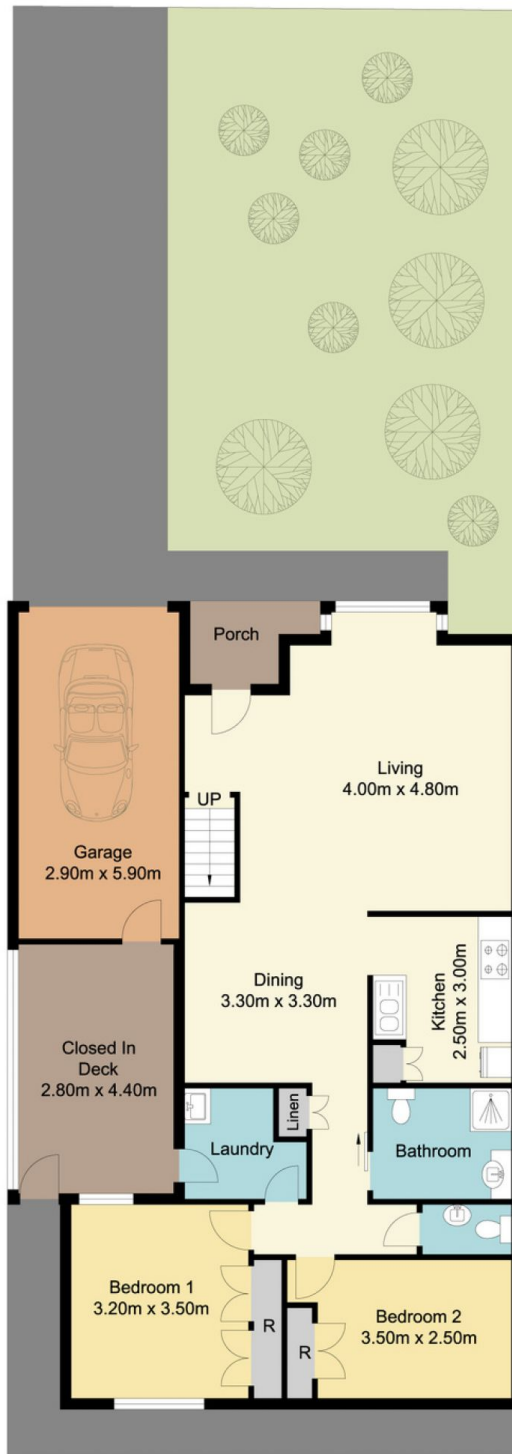
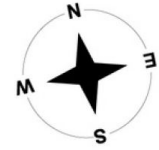
Ground Floor

Total Approx Floor Area 132.09 sq.m

Measurements are approximate. Not to scale. For illustrative purposes only. Boundaries are approximate

48 Green Close, Mardi

SITE PLAN



Total Approx Floor Area 132.09 sq.m

Measurements are approximate. Not to scale. For illustrative purposes only. Boundaries are approximate