

43 Howarth Street Wyong NSW

10 🚗

An ideal location opposite the Wyong train station with plenty of passing traffic.

Consists of the front main building which has previously been approved as a café and has been set up with a café kitchen. This is 122 sq mtrs in size.

Adjoined to the back of this is a warehouse of 96 sq mtrs.

Beyond this are two further storage sheds of 204 sq mtrs.

Total land size 1233 sq mtrs approx.

At the back of the property there is large open carpark space.

The front shop has a street awning to give shade from the western sun and front double door entry to the shop / office area.

A concrete driveway down the length of the property gives unrestricted vehicle access.

The lessee will be responsible for their electricity, water

Building Size : 218 sqm

Land Size : 1233 sqm

View : <http://www.coastwidefn.com.au/lease/nsw/central-coast-region/wyong/commercial/retail/7336439>



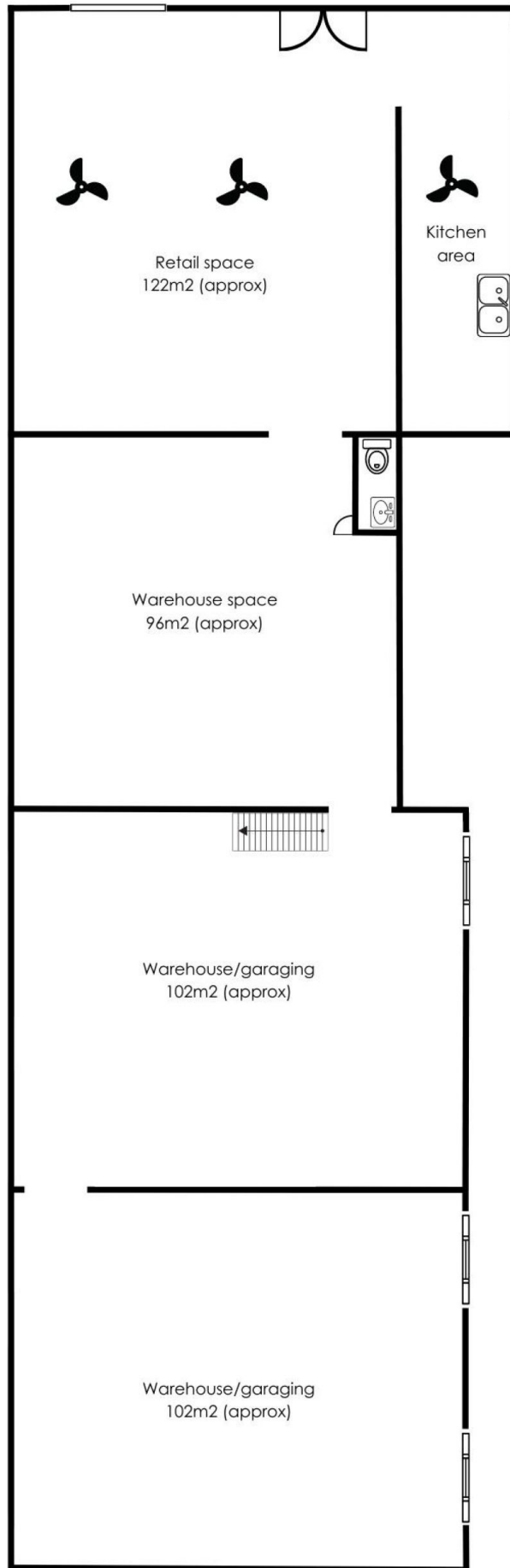
Adrian Simpson
02 4353 1999



David Manuelle
02 4353 1999

<http://www.coastwidefn.com.au>

We sell, rent and manage Real Estate, Residential, Lifestyle and Commercial across the Central Coast



Scaling is approximate

THE INFORMATION CONTAINED IN THIS DOCUMENT HAS BEEN PROVIDED BY PARTIES. THE AGENCY HAS NOT CHECKED THE INFORMATION AND MERELY PASSES IT ON, NOT HAVING A BELIEF ONE WAY OR THE OTHER AS TO ITS ACCURACY. INTERESTED PARTIES SHOULD MAKE AND RELY UPON THEIR OWN ENQUIRIES.

43 Howarth Street, Wyong