



1540 Mandalong Road Dooralong NSW

4 🏠 2 🚗 4 🚗

The rare opportunity to secure an exceptional lifestyle property in the tightly held area of Dooralong is now yours. Enjoy country living at its finest, this gorgeous family home is situated along breathtaking Mandalong Road and sits proudly on a beautifully manicured 2.74 acre (approx) block.

Offering everything the most discerning home buyer could wish for including parents retreat with en-suite, multiple entertaining areas, large modern kitchen, alfresco entertainment areas, large shedding, solar hot water, solar panels, study or 4th bedroom. Sure to surpass your expectations, an inspection is a must. Call and plan your treechange today!

Features:-

Price : \$ 1,530,000
Building Size : 290 sqm
Land Size : 1.1 ha
View : <http://www.coastwidefn.com.au/sale/nsw/central-coast-region/dooralong/residential/acreagesemirural/7121690>



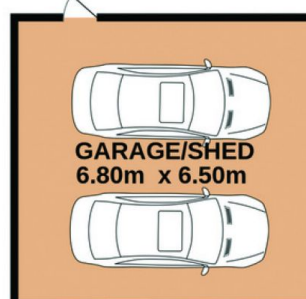
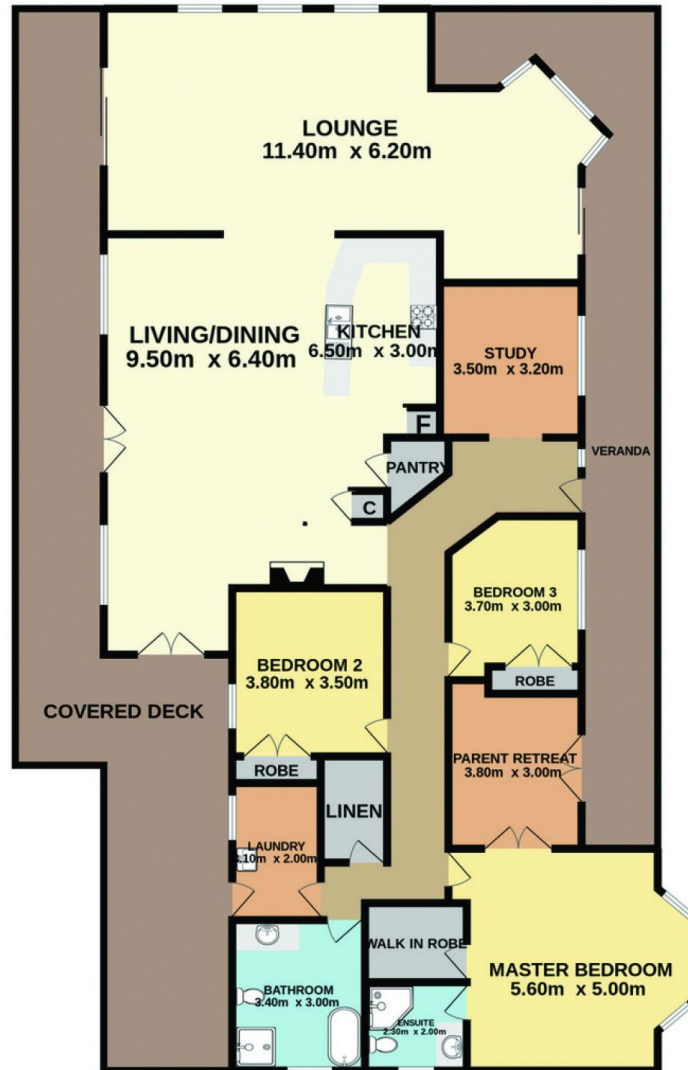
David Want
0402 810 831

<http://www.coastwidefn.com.au>

We sell, rent and manage Real Estate, Residential, Lifestyle and Commercial across the Central Coast



1540 Mandalong Road, Dooralong



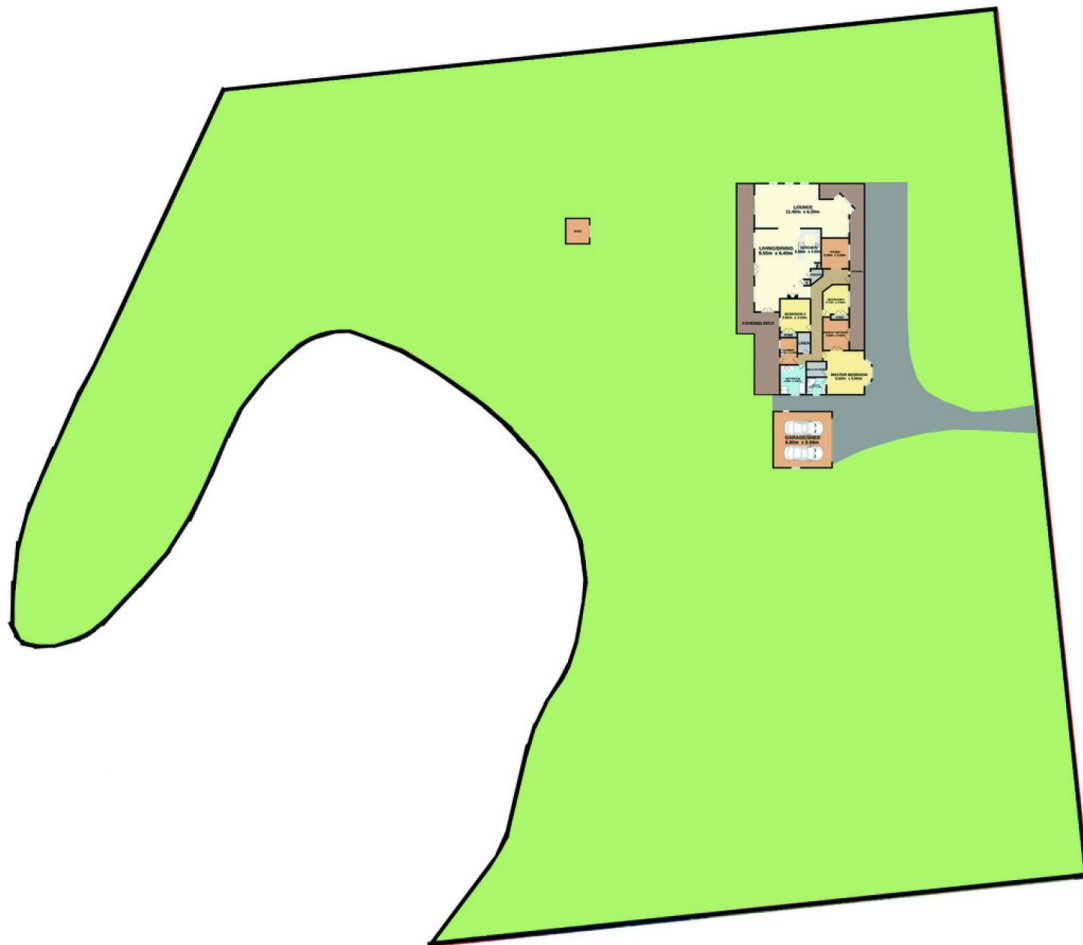
Total Approx. Floor Area 290.40 Sq.m.

Measurements are approximate. Not to scale. For illustrative purposes only. Boundaries are approximate.



1540 Mandalong Road, Dooralong

SITE PLAN



Measurements are approximate. Not to scale. For illustrative purposes only. Boundaries are approximate.