



## 81 Fishburn Crescent Watanobbi NSW

4 3 3

Currently returning \$650 per week and with the potential to return up to \$870 per week, this property boasts a comfortable 3 bedroom home plus an attached 1 bedroom flat. Utilising the dual street frontage both homes enjoy separate street access and separate fully fenced yards.

The main home features 3 generous bedrooms with an ensuite to the main. Formal lounge and dining rooms as well as a spacious kitchen and family room. Complete with a covered entertaining area, double garage and fully fenced yard. Currently returning \$450 per week with current market rent being around \$520 per week.

The flat features 1 large bedroom with an ensuite and robes, open plan kitchen and lounge plus an additional living area, offstreet parking and a fully fenced yard. Currently returning \$270 per week with current market rent

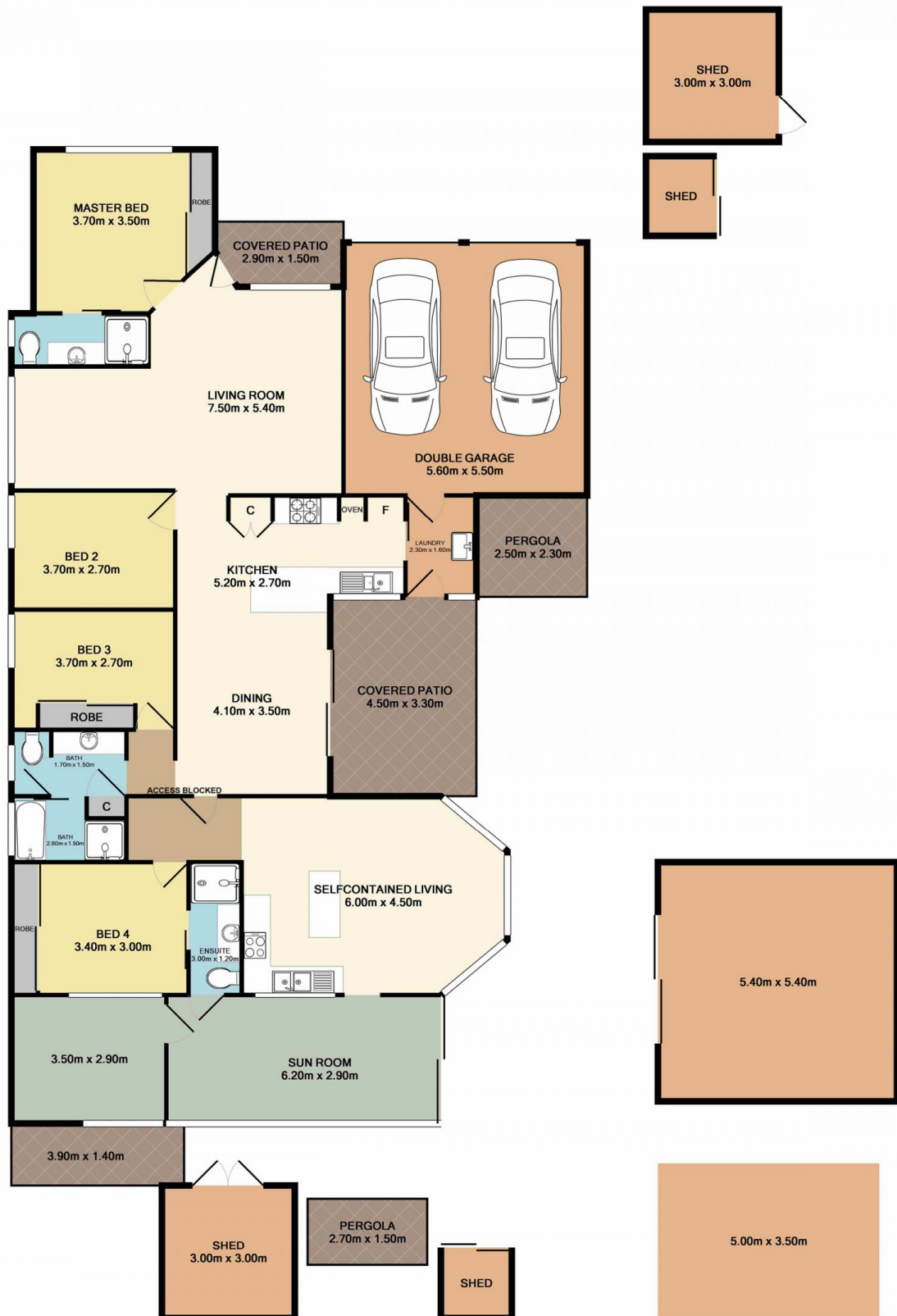
**Price** : \$ 830,000  
**Land Size** : 713 sqm  
**View** : <http://www.coastwidefn.com.au/sale/nsw/central-coast-region/watanobbi/residential/house/6880781>



**David Manuelle**  
**02 4353 1999**

<http://www.coastwidefn.com.au>

We sell, rent and manage Real Estate, Residential, Lifestyle and Commercial across the Central Coast



Total Approx. Floor Area 282.6 SQ.M. 3042 SQ.FT.

Measurements are approximate. Not to scale. For illustrative purposes only. Boundaries are approximate.



## SITE PLAN



Measurements are approximate. Not to scale. For illustrative purposes only. Boundaries are approximate.