



1485 Yarramalong Road Yarramalong NSW

This 26 acres of cleared usable land is ready for your imagination to go wild.

With a DA in place for intensive plant agriculture, an elevated shed and 2 greenhouses, this property is ideal for those looking to get into the agricultural game.

If agriculture is not for you, perhaps you could build your dream home (S.T.C.A) overlooking this lovely level parcel of rich fertile land situated on the banks of Wyong Creek.

Included in the sale are a 50ML water license, tractor, forklift and water pump.

Located only 20 minutes away from Westfield Tuggerah and the M1 Motorway, why wouldn't you make the move.

Price : \$ 850,000
Land Size : 26 Acres
View : <http://www.coastwidefn.com.au/sale/nsw/central-coast-region/yarramalong/residential/land/6396121>



David Manuelle
02 4353 1999

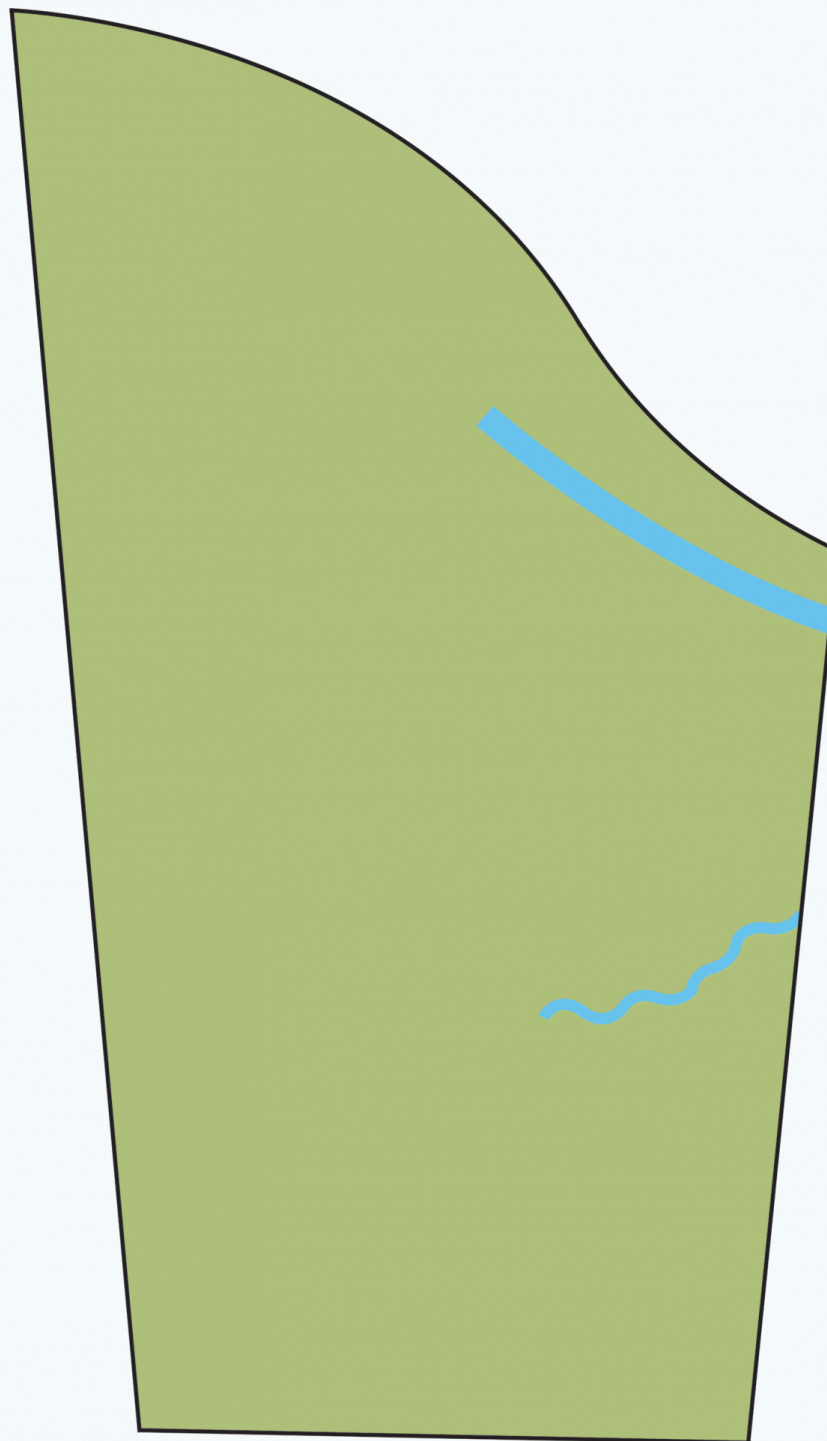
<http://www.coastwidefn.com.au>

We sell, rent and manage Real Estate, Residential, Lifestyle and Commercial across the Central Coast



1485 Yarramalong Road, Yarramalong

SITE PLAN



YARRAMALONG ROAD

Measurements are approximate. Not to scale. For illustrative purposes only. Boundaries are approximate.