



4 Edinburgh Circuit Wamberal NSW

4 2 4

Located in a quiet street and highly sought after area of Wamberal is this fabulous renovated single level home, that is the perfect haven for a growing family to enjoy a slice of coastal living. With huge growth potential and positioned on a 809 sqm block, only moments to Gosford bound buses, Wamberal Lagoon and beautiful sandy beachfront.

Price : \$ 1,130,000
Land Size : 809 sqm
View : <http://www.coastwidefn.com.au/sale/nsw/central-coast-region/wamberal/residential/house/5722293>

- Lovely front garden draws the eye to a superb rendered facade.
- Generous living area leading into a more generous open plan kitchen/dining.
- Easy outdoor flow from dining to a large alfresco oasis.
- Inviting salt-water swimming pool.
- Ample capacity for grand gatherings or quite family barbecues.
- Sizeable modern kitchen has lots of storage, gas cooktop,



Michael Eslick
0402 810 831



Skye Le Marseny
0403 271 122

<http://www.coastwidefn.com.au>

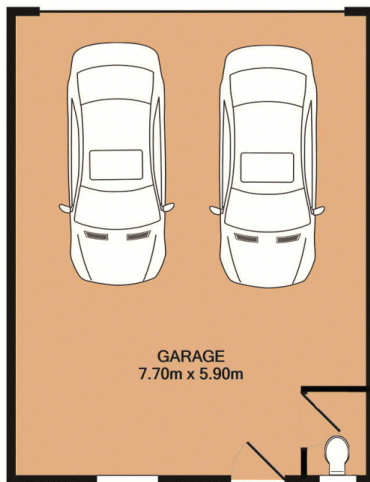
We sell, rent and manage Real Estate, Residential, Lifestyle and Commercial across the Central Coast

SITE PLAN

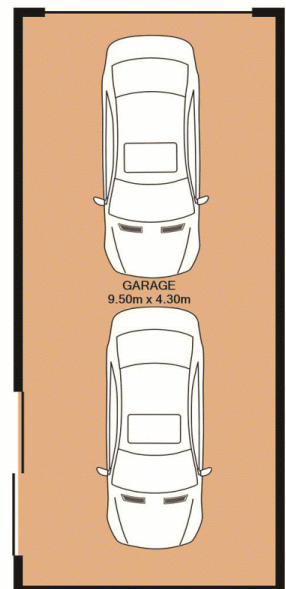
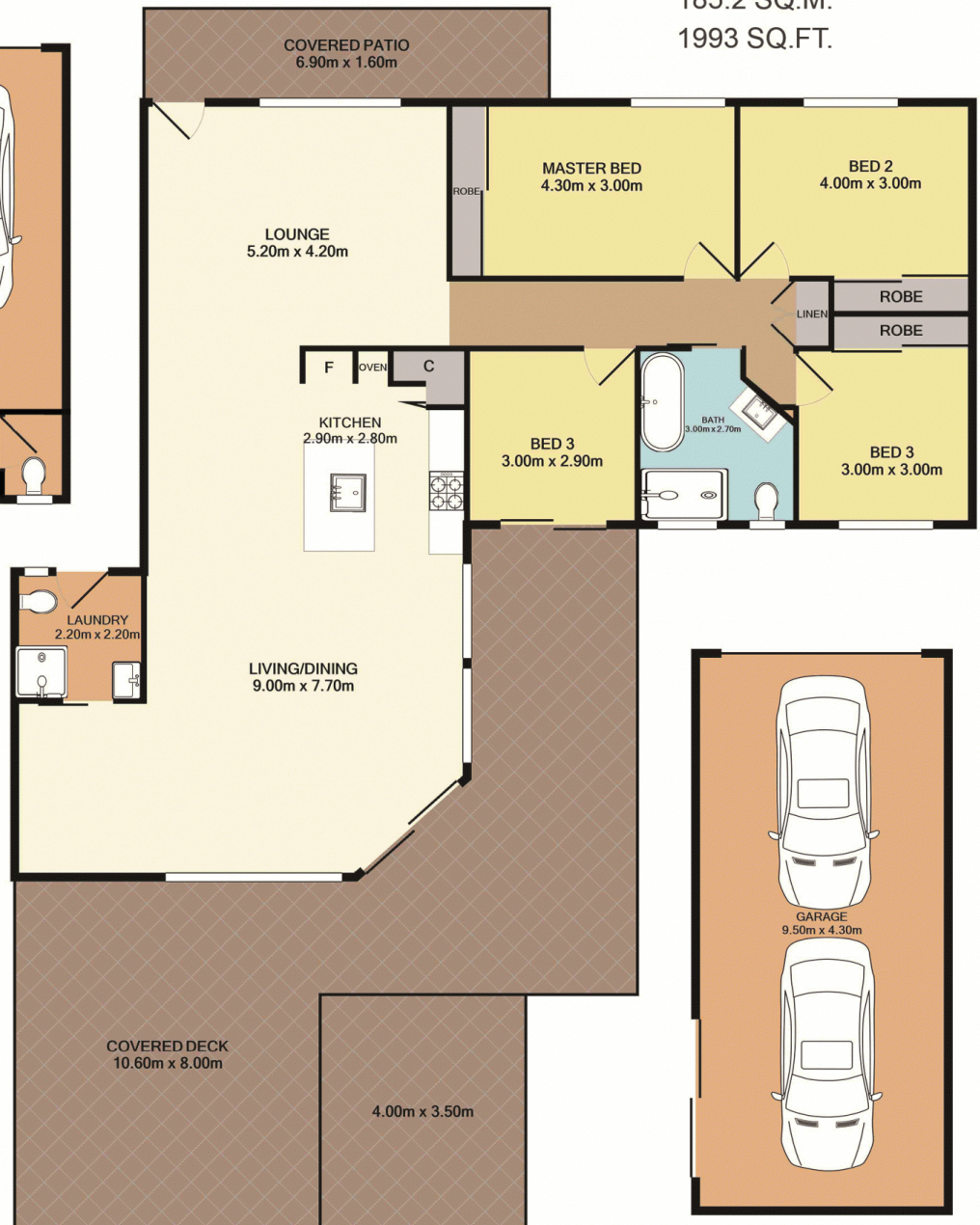




Lower Level
45.4 SQ.M.
489 SQ.FT.



Upper Level
185.2 SQ.M.
1993 SQ.FT.



Total Approx. Floor Area 230.6 SQ.M. 2483 SQ.FT.

Measurements are approximate. Not to scale. For illustrative purposes only. Boundaries are approximate.